

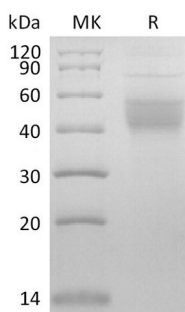
**Product Name: Recombinant Mouse IL-2RB (C-6His)**  
**Catalog #: PHM2262**



## Summary

<b>Name</b>	IL-2 R beta/IL-2RB/CD122/IL-2 Receptor Subunit Beta
<b>Purity</b>	Greater than 95% as determined by reducing SDS-PAGE
<b>Endotoxin level</b>	<1 EU/μg as determined by LAL test.
<b>Construction</b>	Recombinant Mouse Interleukin-2 Receptor subunit beta is produced by our Mammalian expression system and the target gene encoding Ala27-Glu240 is expressed with a 6His tag at the C-terminus.
<b>Accession #</b>	P16297
<b>Host</b>	Human Cells
<b>Species</b>	Mouse
<b>Predicted Molecular Mass</b>	26.1 KDa
<b>Formulation</b>	Lyophilized from a 0.2 μm filtered solution of PBS, 8% Trehalose, 4% Mannitol, 0.05% Tween 80, pH7.4.
<b>Shipping</b>	The product is shipped at ambient temperature. Upon receipt, store it immediately at the temperature listed below.
<b>Stability&amp;Storage</b>	Store at ≤-70°C, stable for 6 months after receipt. Store at ≤-70°C, stable for 3 months under sterile conditions after opening. Please minimize freeze-thaw cycles.
<b>Reconstitution</b>	Always centrifuge tubes before opening. Do not mix by vortex or pipetting. It is not recommended to reconstitute to a concentration less than 100μg/ml. Dissolve the lyophilized protein in distilled water. Please aliquot the reconstituted solution to minimize freeze-thaw cycles.

## SDS-PAGE image



## Background

**Product Name: Recombinant Mouse IL-2RB (C-6His)**  
**Catalog #: PHM2262**

---



**Alternative Names**

Interleukin-2 receptor subunit beta; IL2RB; IL-2 receptor subunit beta; IL-2R subunit beta; High affinity IL-2 receptor subunit beta; CD122

**Background**

IL-2RB, also known as interleukin-2 receptor subunit beta, is the receptor for interleukin-2. IL2 receptor complex is involved in receptor mediated endocytosis and transduces the mitogenic signals of IL2. IL2 receptor complex has three forms with respect to ability to bind IL2. IL-2RB is belonged to a type I membrane protein, and has a 26 residue signal peptide, a 214 residue extracellular region, a 25 residue transmembrane region and a 286 residue cytoplasmic domain. IL-2RB is the subunit critical for receptor-mediated signaling via physically or functionally coupling to other signaling molecules, such as the Jak-STAT and Src-family protein tyrosine kinase although it lacks apparent catalytic motifs.

**Note**

For Research Use Only , Not for Diagnostic Use.