

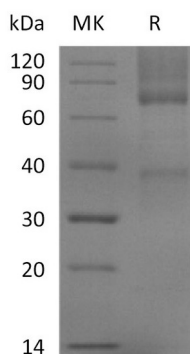
**Product Name: Recombinant Mouse GPC3 (C-6His)**  
**Catalog #: PHM2123**



## Summary

<b>Name</b>	GPC3/OCI5/Glypican-3
<b>Purity</b>	Greater than 95% as determined by reducing SDS-PAGE
<b>Endotoxin level</b>	<1 EU/μg as determined by LAL test.
<b>Construction</b>	Recombinant Mouse Glypican-3 is produced by our Mammalian expression system and the target gene encoding Gln25-Met557 is expressed with a 6His tag at the C-terminus.
<b>Accession #</b>	Q8CFZ4
<b>Host</b>	Human Cells
<b>Species</b>	Mouse
<b>Predicted Molecular Mass</b>	61.6 KDa
<b>Formulation</b>	Lyophilized from a 0.2 μm filtered solution of PBS, 5% Trehalose, pH 7.4.
<b>Shipping</b>	The product is shipped at ambient temperature. Upon receipt, store it immediately at the temperature listed below.
<b>Stability&amp;Storage</b>	Store at ≤-70°C, stable for 6 months after receipt. Store at ≤-70°C, stable for 3 months under sterile conditions after opening. Please minimize freeze-thaw cycles.
<b>Reconstitution</b>	Always centrifuge tubes before opening. Do not mix by vortex or pipetting. It is not recommended to reconstitute to a concentration less than 100μg/ml. Dissolve the lyophilized protein in distilled water. Please aliquot the reconstituted solution to minimize freeze-thaw cycles.

## SDS-PAGE image



## Background

**Product Name: Recombinant Mouse GPC3 (C-6His)**  
**Catalog #: PHM2123**

---



**Alternative Names**

Glypican-3; GTR2-2; Intestinal protein OCI-5; MXR7; GPC3; OCI5

**Background**

Glypican-3/GPC3 is a member of the glypican family. It belongs to the glypican family and is highly expressed in lung, liver, and kidney. It is a heparan sulfate proteoglycan, which is overexpressed in various neoplasms such as hepatocellular carcinoma, malignant melanoma, and testicular yolk sac tumor, and plays an important role in cell growth and differentiation. GPC3 function is tissue dependent. In some tissues, GPC3 acts as a tumor suppressor gene, whereas in others, it acts as an oncofetal protein. GPC3 is a reliable marker for hepatocellular carcinoma. The sensitivity and specificity exceeds both alpha-fetoprotein and hepatocyte-paraffin1. GPC3 immunohistochemistry can aid in the differentiation of testicular germ cell tumors, being expressed in all yolk sac tumors but not in seminomas. GPC3 expression has also been identified in some squamous cell carcinomas of the lung and clear cell carcinomas of the ovary. Glypican-3 is currently regarded as a tumor marker and potential target for immunotherapy.

**Note**

For Research Use Only , Not for Diagnostic Use.