

Product Name: Recombinant Mouse IL-1RL2 (C-Fc)
Catalog #: PHM2094

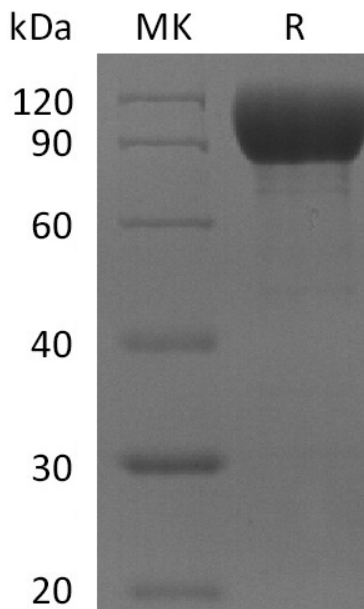


Summary

Name	IL-36R/IL-1RL2/IL-1Rrp2/IL-1 Receptor-Like 2
Purity	Greater than 95% as determined by reducing SDS-PAGE
Endotoxin level	<1 EU/μg as determined by LAL test.
Construction	Recombinant Mouse Interleukin-1 Receptor-like 2 is produced by our Mammalian expression system and the target gene encoding Asp22-Arg338(Ala158Val) is expressed with a human IgG1 Fc tag at the C-terminus.
Accession #	Q9ERS7
Host	Human Cells
Species	Mouse
Predicted Molecular Mass	62.97 KDa
Formulation	Lyophilized from a 0.2 μm filtered solution of PBS, pH 7.4.
Shipping	The product is shipped at ambient temperature. Upon receipt, store it immediately at the temperature listed below.
Stability&Storage	Lyophilized protein should be stored at ≤ -20°C, stable for one year after receipt. Reconstituted protein solution can be stored at 2-8°C for 2-7 days. Aliquots of reconstituted samples are stable at ≤ -20°C for 3 months.
Reconstitution	Always centrifuge tubes before opening. Do not mix by vortex or pipetting. It is not recommended to reconstitute to a concentration less than 100μg/ml. Dissolve the lyophilized protein in distilled water. Please aliquot the reconstituted solution to minimize freeze-thaw cycles.

SDS-PAGE image

Product Name: Recombinant Mouse IL-1RL2 (C-Fc)
Catalog #: PHM2094



Alternative Names

Interleukin-1 receptor-like 2; IL1RL2; IL-36 receptor; IL-36R; IL-1Rrp2; IL1R-rp2

Background

Interleukin-1 receptor-like 2 is a protein that in humans is encoded by the IL1RL2 gene, belongs to the interleukin-1 receptor family. IL1RL2 is the receptor for interleukin-36 (IL36A, IL36B and IL36G). After binding to interleukin-36 associates with the coreceptor IL1RAP to form the interleukin-36 receptor complex which mediates interleukin-36-dependent activation of NF-kappa-B, MAPK and other pathways.

Note

For Research Use Only , Not for Diagnostic Use.