

Product Name: Recombinant Mouse Mesothelin (C-6His)
Catalog #: PHM1950

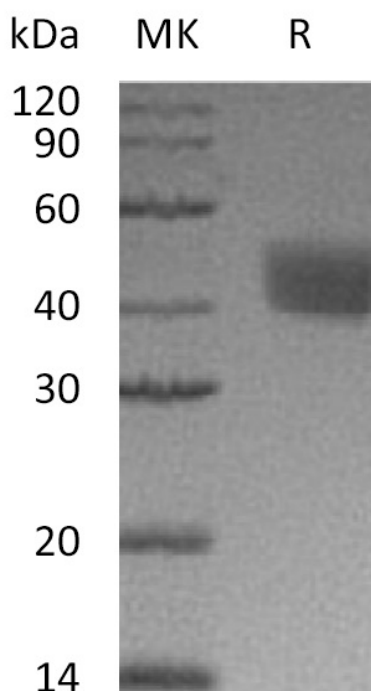


Summary

Name	Mesothelin/MPF/MSLN/CAK1/Mes/SMR
Purity	Greater than 95% as determined by reducing SDS-PAGE
Endotoxin level	<1 EU/μg as determined by LAL test.
Construction	Recombinant Mouse Mesothelin is produced by our Mammalian expression system and the target gene encoding Asp298-Ser600 is expressed with a 6His tag at the C-terminus.
Accession #	Q61468
Host	Human Cells
Species	Mouse
Predicted Molecular Mass	35 KDa
Formulation	Lyophilized from a 0.2 μm filtered solution of PBS, pH 7.4.
Shipping	The product is shipped at ambient temperature. Upon receipt, store it immediately at the temperature listed below.
Stability&Storage	Store at ≤-70°C, stable for 6 months after receipt. Store at ≤-70°C, stable for 3 months under sterile conditions after opening. Please minimize freeze-thaw cycles.
Reconstitution	Always centrifuge tubes before opening. Do not mix by vortex or pipetting. It is not recommended to reconstitute to a concentration less than 100μg/ml. Dissolve the lyophilized protein in distilled water. Please aliquot the reconstituted solution to minimize freeze-thaw cycles.

SDS-PAGE image

Product Name: Recombinant Mouse Mesothelin (C-6His)
Catalog #: PHM1950



Alternative Names

Mesothelin; Msln; Mes; Mpf

Background

Mesothelin is derived from a 70 kDa precursor that also includes Megakaryocyte Potentiating Factor (MPF). The 70 kDa precursor is expressed on the cell surface where it is cleaved at a dibasic proteolytic site to release the 32 kDa glycosylated MPF. MPF is a cytokine that potentiates IL3 induced megakaryocyte colony formation. The term Mesothelin refers to the 40 kDa glycosylated protein which remains attached to the cell surface via a GPI linkage. Mesothelin is over expressed in several human tumors, including mesothelioma and ovarian and pancreatic adenocarcinoma. The interaction between mesothelin and MUC16 (also known as CA125) may facilitate the implantation and peritoneal spread of tumors by cell adhesion. The region (296-359) consisting of 64 amino acids at the N-terminal of cell surface mesothelin is the functional binding domain for MUC16. Mesothelin is a tumour differentiation antigen that is normally present on the mesothelial cells lining the pleura, peritoneum and pericardium. A soluble form of Mesothelin, with its GPI anchor intact, is released from tumor cells and binds to MMR/CD206 on macrophages.

Note

For Research Use Only , Not for Diagnostic Use.