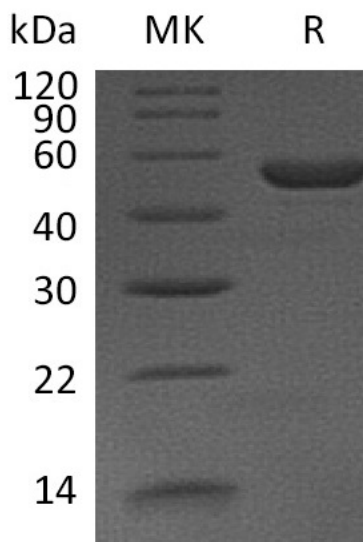


Summary

Name	IL-11/Interleukin-11
Purity	Greater than 95% as determined by reducing SDS-PAGE
Endotoxin level	<1 EU/μg as determined by LAL test.
Construction	Recombinant Mouse Interleukin-11 is produced by our Mammalian expression system and the target gene encoding Pro22-Leu199 is expressed with a human IgG1 Fc tag at the C-terminus.
Accession #	P47873
Host	Human Cells
Species	Mouse
Predicted Molecular Mass	46.3 KDa
Formulation	Lyophilized from a 0.2 μm filtered solution of 10mM HAc-NaAc, 150mM NaCl, 0.004% Tween80, 5% Mannitol, pH 4.0.
Shipping	The product is shipped at ambient temperature. Upon receipt, store it immediately at the temperature listed below.
Stability&Storage	Lyophilized protein should be stored at ≤ -20°C, stable for one year after receipt. Reconstituted protein solution can be stored at 2-8°C for 2-7 days. Aliquots of reconstituted samples are stable at ≤ -20°C for 3 months.
Reconstitution	Always centrifuge tubes before opening. Do not mix by vortex or pipetting. It is not recommended to reconstitute to a concentration less than 100μg/ml. Dissolve the lyophilized protein in distilled water. Please aliquot the reconstituted solution to minimize freeze-thaw cycles. Always centrifuge tubes before opening. Do not mix by vortex or pipetting. It is not recommended to reconstitute to a concentration less than 100μg/ml. Dissolve the lyophilized protein in distilled water. Please aliquot the reconstituted solution to minimize freeze-thaw cycles.

SDS-PAGE image

Product Name: Recombinant Mouse IL-11 (C-Fc)
Catalog #: PHM1933



Alternative Names

Interleukin-11; IL11; IL-11

Background

Interleukin-11(IL-11) is a secreted protein and belongs to the IL-6 superfamily. IL-11 has been demonstrated to improve platelet recovery after chemotherapy-induced thrombocytopenia, induce acute phase proteins, modulate antigen-antibody responses, participate in the regulation of bone cell proliferation and differentiation and could be used as a therapeutic for osteoporosis. IL-11 stimulates the growth of certain lymphocytes and, in the murine model, stimulates an increase in the cortical thickness and strength of long bones. In addition to having lymphopoietic/hematopoietic and osteotrophic properties, it has functions in many other tissues, including the brain, gut, testis and bone.

Note

For Research Use Only , Not for Diagnostic Use.