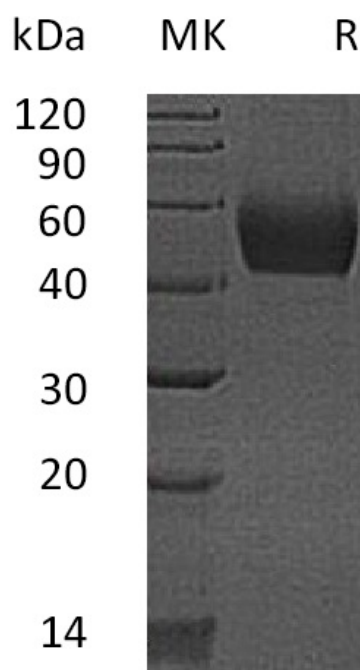


Summary

Name	Lumican/LUM/LDC
Purity	Greater than 95% as determined by reducing SDS-PAGE
Endotoxin level	<1 EU/μg as determined by LAL test.
Construction	Recombinant Mouse Keratan Sulfate Proteoglycan lumican is produced by our Mammalian expression system and the target gene encoding Gln19-Asn338 is expressed with a 6His tag at the C-terminus.
Accession #	P51885
Host	Human Cells
Species	Mouse
Predicted Molecular Mass	37.4 KDa
Formulation	Lyophilized from a 0.2 μm filtered solution of PBS, pH 7.4.
Shipping	The product is shipped at ambient temperature. Upon receipt, store it immediately at the temperature listed below.
Stability&Storage	Store at ≤-70°C, stable for 6 months after receipt. Store at ≤-70°C, stable for 3 months under sterile conditions after opening. Please minimize freeze-thaw cycles.
Reconstitution	Always centrifuge tubes before opening. Do not mix by vortex or pipetting. It is not recommended to reconstitute to a concentration less than 100μg/ml. Dissolve the lyophilized protein in distilled water. Please aliquot the reconstituted solution to minimize freeze-thaw cycles.

SDS-PAGE image

Product Name: Recombinant Mouse Lumican (C-6His)
Catalog #: PHM1932



Alternative Names

Keratan sulfate proteoglycan lumican;KSPG lumican;Lumican

Background

Keratan sulfate proteoglycan lumican, mostly known as lumican, belongs to the SLRP class II subfamily and the small leucine-rich proteoglycan (SLRP) family. Lumican binds to laminin. It has positive regulation of transcription from RNA polymerase II promoter and transforming growth factor beta1 production. Lumican is expressed in a variety of tissues, including skin, artery, lung, cornea, kidney, bone, aorta, and articular cartilage. The abnormal connective tissue phenotype seen in the Lumican null mice shows the importance of the role of Lumican in collagen fibrillogenesis. In addition to the control of collagen fibril assembly, Lumican has been shown to play a role in the regulation of cell proliferation, migration, and adhesion.

Note

For Research Use Only , Not for Diagnostic Use.