

Product Name: Recombinant Mouse HGF (C-6His)
Catalog #: PHM1923

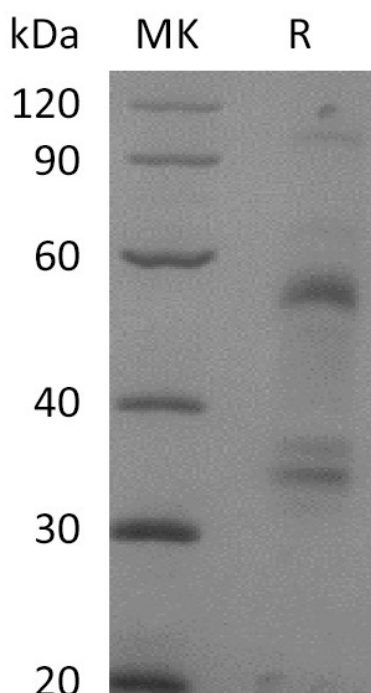


Summary

Name	HGF/Hepatopoietin-A/Hepatocyte Growth Factor
Purity	Greater than 95% as determined by reducing SDS-PAGE
Endotoxin level	<0.01 EU/μg as determined by LAL test.
Construction	Recombinant Mouse Hepatocyte Growth Factor is produced by our Mammalian expression system and the target gene encoding Gln33-/xadLeu728 is expressed with a 6His tag at the C-terminus.
Accession #	Q08048
Host	Human Cells
Species	Mouse
Predicted Molecular Mass	53.5&26.9 KDa
Formulation	Lyophilized from a 0.2 μm filtered solution of PBS, pH 7.4.
Shipping	The product is shipped at ambient temperature. Upon receipt, store it immediately at the temperature listed below.
Stability&Storage	Lyophilized protein should be stored at ≤ -20°C, stable for one year after receipt. Reconstituted protein solution can be stored at 2-8°C for 2-7 days. Aliquots of reconstituted samples are stable at ≤ -20°C for 3 months.
Reconstitution	Always centrifuge tubes before opening. Do not mix by vortex or pipetting. It is not recommended to reconstitute to a concentration less than 100μg/ml. Dissolve the lyophilized protein in distilled water. Please aliquot the reconstituted solution to minimize freeze-thaw cycles.

SDS-PAGE image

Product Name: Recombinant Mouse HGF (C-6His)
Catalog #: PHM1923



Alternative Names

Hepatopoietin-A; Scatter factor; SF; deafness; autosomal recessive 39; DFNB39; F-TCF; hepatocyte growth factor

Background

HGF, is a pleiotropic protein in the Plasminogen subfamily of S1 peptidases. Mouse HGF is secreted as an inactive 728 amino acid (aa) single chain propeptide. It is cleaved after the fourth Kringle domain by a serine protease to form bioactive disulfide-linked HGF with a 60 kDa alpha chain and 30 kDa beta chain. HGF binds heparan-sulfate proteoglycans and the widely expressed receptor tyrosine kinase, HGF R/c-MET. HGF regulates epithelial morphogenesis by inducing cell scattering and branching tubulogenesis. It can also alter epithelium morphology by the induction of nectin-1 alpha ectodomain shedding, an adhesion protein component of adherens junctions.

Note

For Research Use Only , Not for Diagnostic Use.