

Product Name: Recombinant Mouse SLAMF8 (C-6His)
Catalog #: PHM1538

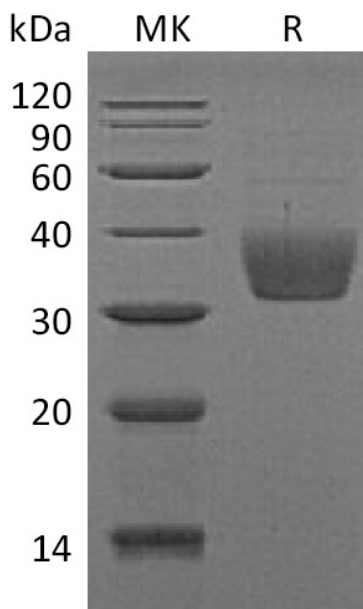


Summary

Name	SLAMF8/SLAM Family Member 8
Purity	Greater than 95% as determined by reducing SDS-PAGE
Endotoxin level	<1 EU/μg as determined by LAL test.
Construction	Recombinant Mouse SLAM Family Member 8 is produced by our Mammalian expression system and the target gene encoding Val21-Asp231 is expressed with a 6His tag at the C-terminus.
Accession #	Q9D3G2
Host	Human Cells
Species	Mouse
Predicted Molecular Mass	24.2 KDa
Formulation	Lyophilized from a 0.2 μm filtered solution of 20mM PB, 150mM NaCl, pH 7.4.
Shipping	The product is shipped at ambient temperature. Upon receipt, store it immediately at the temperature listed below.
Stability&Storage	Lyophilized protein should be stored at ≤ -20°C, stable for one year after receipt. Reconstituted protein solution can be stored at 2-8°C for 2-7 days. Aliquots of reconstituted samples are stable at ≤ -20°C for 3 months.
Reconstitution	Always centrifuge tubes before opening. Do not mix by vortex or pipetting. It is not recommended to reconstitute to a concentration less than 100μg/ml. Dissolve the lyophilized protein in distilled water. Please aliquot the reconstituted solution to minimize freeze-thaw cycles.

SDS-PAGE image

Product Name: Recombinant Mouse SLAMF8 (C-6His)
Catalog #: PHM1538



Alternative Names

SLAM family member 8; B-lymphocyte activator macrophage expressed; CD353; Slamf8; Blame

Background

Mouse SLAM family member 8/SLAMF8 is a single-pass type I membrane protein. It contains one Ig-likeC2-type domain. SLAMF8 is expressed in lymphnode, spleen, thymus and bone marrow. The signaling lymphocyte activation molecule (SLAM) family includes homophilic and heterophilic receptors that modulate both adaptive and innate immune responses. These receptors share a common ectodomain organization: a membrane-proximal immunoglobulin constant domain and a membrane-distal immunoglobulin variable domain that is responsible for ligand recognition. SLAM family of receptors is expressed by a wide range of immune cells. Through their cytoplasmic domain, SLAM family receptors associate with SLAM-associated protein (SAP)-related molecules, a group of cytoplasmic adaptors composed almost exclusively of an SRC homology 2 domain. SLAM family receptors, in association with SAP family adaptors, have crucial roles during normal immune reactions in innate and adaptive immune cells. It may play a role in B-lineage commitment and/or modulation of signaling through the B-cell receptor.

Note

For Research Use Only , Not for Diagnostic Use.