

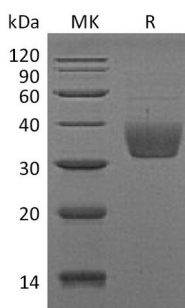
**Product Name: Recombinant Mouse SLAMF8 (C-6His)**  
**Catalog #: PHM1538**



## Summary

<b>Name</b>	SLAMF8/SLAM Family Member 8
<b>Purity</b>	Greater than 95% as determined by reducing SDS-PAGE
<b>Endotoxin level</b>	<1 EU/μg as determined by LAL test.
<b>Construction</b>	Recombinant Mouse SLAM Family Member 8 is produced by our Mammalian expression system and the target gene encoding Val21-Asp231 is expressed with a 6His tag at the C-terminus.
<b>Accession #</b>	Q9D3G2
<b>Host</b>	Human Cells
<b>Species</b>	Mouse
<b>Predicted Molecular Mass</b>	24.2 KDa
<b>Formulation</b>	Lyophilized from a 0.2 μm filtered solution of 20mM PB, 150mM NaCl, pH 7.4.
<b>Shipping</b>	The product is shipped at ambient temperature. Upon receipt, store it immediately at the temperature listed below.
<b>Stability&amp;Storage</b>	Store at ≤-70°C, stable for 6 months after receipt. Store at ≤-70°C, stable for 3 months under sterile conditions after opening. Please minimize freeze-thaw cycles.
<b>Reconstitution</b>	Always centrifuge tubes before opening. Do not mix by vortex or pipetting. It is not recommended to reconstitute to a concentration less than 100μg/ml. Dissolve the lyophilized protein in distilled water. Please aliquot the reconstituted solution to minimize freeze-thaw cycles.

## SDS-PAGE image



## Background

**Product Name: Recombinant Mouse SLAMF8 (C-6His)**  
**Catalog #: PHM1538**

---



**Alternative Names**

SLAM family member 8; B-lymphocyte activator macrophage expressed; CD353; Slamf8; Blame

**Background**

Mouse SLAM family member 8/SLAMF8 is a single-pass type I membrane protein. It contains one Ig-likeC2-type domain. SLAMF8 is expressed in lymphnode, spleen, thymus and bone marrow. The signaling lymphocyte activation molecule (SLAM) family includes homophilic and heterophilic receptors that modulate both adaptive and innate immune responses. These receptors share a common ectodomain organization: a membrane-proximal immunoglobulin constant domain and a membrane-distal immunoglobulin variable domain that is responsible for ligand recognition. SLAM family of receptors is expressed by a wide range of immune cells. Through their cytoplasmic domain, SLAM family receptors associate with SLAM-associated protein (SAP)-related molecules, a group of cytoplasmic adaptors composed almost exclusively of an SRC homology 2 domain. SLAM family receptors, inassociation with SAP family adaptors, have crucial roles during normal immune reactions in innate and adaptive immune cells. It may play a role in B-lineage commitment and/or modulation of signaling through the B-cell receptor.

**Note**

For Research Use Only , Not for Diagnostic Use.