

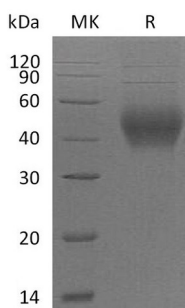
Product Name: Recombinant Mouse SLAMF2 (C-6His)
Catalog #: PHM1533



Summary

Name	CD48/SLAMF2/SLAM Family Member 2/BCM1/BLAST1
Purity	Greater than 95% as determined by reducing SDS-PAGE
Endotoxin level	<1 EU/μg as determined by LAL test.
Construction	Recombinant Mouse SLAM Family Member 2 is produced by our Mammalian expression system and the target gene encoding Phe23-Arg216 is expressed with a 6His tag at the C-terminus.
Accession #	Q18PH8
Host	Human Cells
Species	Mouse
Predicted Molecular Mass	23.1 KDa
Formulation	Lyophilized from a 0.2 μm filtered solution of PBS, pH 7.4.
Shipping	The product is shipped at ambient temperature. Upon receipt, store it immediately at the temperature listed below.
Stability&Storage	Store at ≤-70°C, stable for 6 months after receipt. Store at ≤-70°C, stable for 3 months under sterile conditions after opening. Please minimize freeze-thaw cycles.
Reconstitution	Always centrifuge tubes before opening. Do not mix by vortex or pipetting. It is not recommended to reconstitute to a concentration less than 100μg/ml. Dissolve the lyophilized protein in distilled water. Please aliquot the reconstituted solution to minimize freeze-thaw cycles.

SDS-PAGE image



Background

Product Name: Recombinant Mouse SLAMF2 (C-6His)
Catalog #: PHM1533



Alternative Names

CD48; BLAST1; BCM1; SLAMF2; SLAM Family Member 2

Background

CD48 is a GPI-linked protein in the CD2 family of immunoglobulin superfamily proteins. CD48 is expressed on most lineage-committed hematopoietic cells but not on hematopoietic stem cells or multipotent hematopoietic progenitors. Among dendritic cells (DC), CD48 is selectively expressed on circulating myeloid DC and resident bone marrow and thymus DC. CD2, 2B4, and heparan sulfate function as CD48 ligands. CD48 is competent to transduce signals and can also trigger signaling through CD2 or 2B4. CD48 expressed on NK cells is coactivating, whereas CD48 expressed on other cell types inhibits NK cell activation.

Note

For Research Use Only , Not for Diagnostic Use.