

Product Name: Recombinant Mouse Serpin G1 (C-6His)
Catalog #: PHM1518

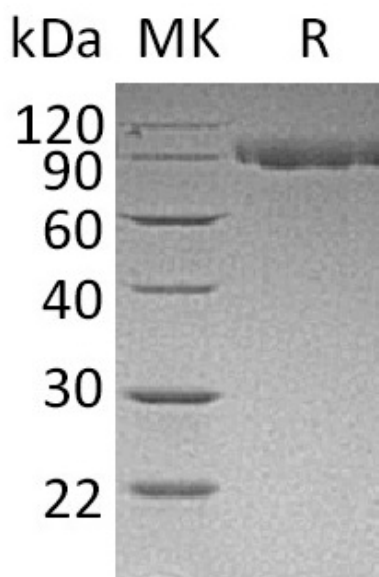


Summary

Name	Serpin G1/Serping1/C1nh
Purity	Greater than 95% as determined by reducing SDS-PAGE
Endotoxin level	<1 EU/μg as determined by LAL test.
Construction	Recombinant Mouse Serine Protease Inhibitor-clade G1 is produced by our Mammalian expression system and the target gene encoding Ala20-Gly504 is expressed with a 6His tag at the C-terminus.
Accession #	P97290
Host	Human Cells
Species	Mouse
Predicted Molecular Mass	54.6 KDa
Formulation	Lyophilized from a 0.2 μm filtered solution of 20mM Tris-HCl, 150mM NaCl, pH 8.0.
Shipping	The product is shipped at ambient temperature. Upon receipt, store it immediately at the temperature listed below.
Stability&Storage	Store at ≤-70°C, stable for 6 months after receipt. Store at ≤-70°C, stable for 3 months under sterile conditions after opening. Please minimize freeze-thaw cycles.
Reconstitution	Always centrifuge tubes before opening. Do not mix by vortex or pipetting. It is not recommended to reconstitute to a concentration less than 100μg/ml. Dissolve the lyophilized protein in distilled water. Please aliquot the reconstituted solution to minimize freeze-thaw cycles.

SDS-PAGE image

Product Name: Recombinant Mouse Serpin G1 (C-6His)
Catalog #: PHM1518



Alternative Names

SERPIN G1; Plasma protease C1 inhibitor; C1 Inh; C1 esterase inhibitor; C1-inhibiting factor; Serping1; C1nh

Background

SERPIN G1 is a member of the serpin family. The C-terminal serpin domain is similar to other serpins, and this part of C1-INH provides the inhibitory activity. SERPIN G1 is involved in the inhibition of the complement system to prevent spontaneous activation. SERPIN G1 may play a potentially crucial role in regulating important physiological pathways including complement activation, blood coagulation, fibrinolysis and the generation of kinins. SERPIN G1 prevents the proteolytic cleavage of later complement components C4 and C2 by C1 and MBL. SERPIN G1 is a very efficient physiological inhibitor of FXIIa, plasma kallikrein and fXIa, and could inhibit chymotrypsin and kallikrein. It forms a proteolytically inactive stoichiometric complex with the C1r or C1s proteases in the C1 complex of classical pathway of complement. Activation of the C1 complex is under control of the C1-inhibitor.

Note

For Research Use Only , Not for Diagnostic Use.