

**Product Name: Recombinant Mouse Serpin F2 (C-Fc)**  
**Catalog #: PHM1516**

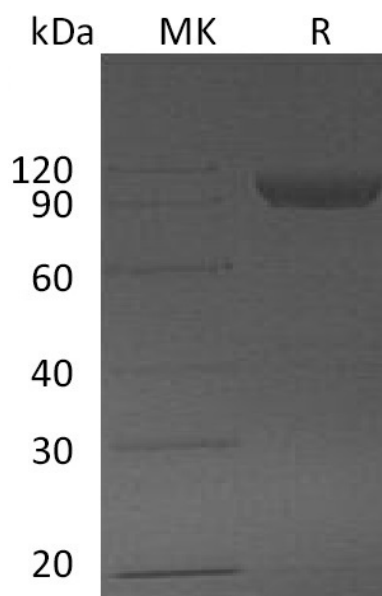


## Summary

<b>Name</b>	Serpin F2/Alpha-2-Antiplasmin
<b>Purity</b>	Greater than 95% as determined by reducing SDS-PAGE
<b>Endotoxin level</b>	<1 EU/μg as determined by LAL test.
<b>Construction</b>	Recombinant Mouse Serine Protease Inhibitor-clade F2 is produced by our Mammalian expression system and the target gene encoding Val28-Lys491 is expressed with a human IgG1 Fc tag at the C-terminus.
<b>Accession #</b>	Q61247
<b>Host</b>	Human Cells
<b>Species</b>	Mouse
<b>Predicted Molecular Mass</b>	79.3 KDa
<b>Formulation</b>	Supplied as a 0.2 μm filtered solution of 20mM Tris-HCl, 150mM NaCl, 20% Glycerol, pH 8.0.
<b>Shipping</b>	The product is shipped on dry ice/polar packs. Upon receipt, store it immediately at the temperature listed below.
<b>Stability&amp;Storage</b>	Store at ≤-70°C, stable for 6 months after receipt. Store at ≤-70°C, stable for 3 months under sterile conditions after opening. Please minimize freeze-thaw cycles.
<b>Reconstitution</b>	

## SDS-PAGE image

**Product Name: Recombinant Mouse Serpin F2 (C-Fc)**  
**Catalog #: PHM1516**



### Alternative Names

Alpha-2-antiplasmin; Alpha-2-AP; Alpha-2-plasmin inhibitor; Alpha-2-PI; Serpin F2; Serpinf2

### Background

Alpha-2-antiplasmin, also called Serpin F2, is a serine protease inhibitor (serpin) responsible for inactivating plasmin, and an important enzyme participates in fibrinolysis and degradation of other proteins. In liver cirrhosis, there is decreased production of alpha 2-antiplasmin, leading to decreased inactivation of plasmin and an increase in fibrinolysis. Serpin F2 is major expressed on liver and kidney. Some other tissues such as muscle, intestine, central nervous system, and placenta also express Serpin F2 mRNA at a moderate level indicated that it is a key regulator of plasmin-mediated proteolysis in these tissues.

### Note

For Research Use Only , Not for Diagnostic Use.