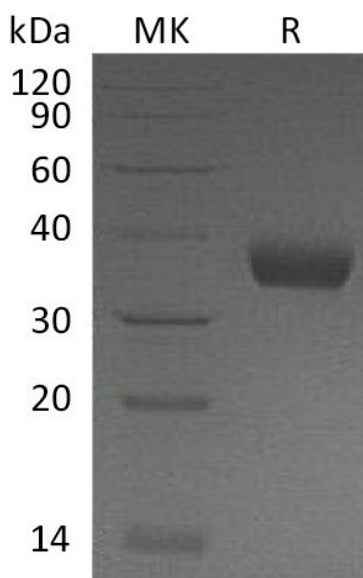


## Summary

|                                 |   |
|---------------------------------|---|
| <b>Name</b>                     | Prolactin Receptor/PRLR   |
| <b>Purity</b>                   | Greater than 95% as determined by reducing SDS-PAGE   |
| <b>Endotoxin level</b>          | <1 EU/μg as determined by LAL test.   |
| <b>Construction</b>             | Recombinant Mouse Prolactin Receptor is produced by our Mammalian expression system and the target gene encoding Gln20-Asp229 is expressed with a 6His tag at the C-terminus.   |
| <b>Accession #</b>              | Q08501  |
| <b>Host</b>                     | Human Cells   |
| <b>Species</b>                  | Mouse   |
| <b>Predicted Molecular Mass</b> | 25.6 KDa  |
| <b>Formulation</b>              | Lyophilized from a 0.2 μm filtered solution of 20 mM Citrate, 6% Sucrose, 4% Dextran-70, 50 mM NaCl, 0.05% Tween80, pH3.5.  |
| <b>Shipping</b>                 | The product is shipped at ambient temperature. Upon receipt, store it immediately at the temperature listed below.  |
| <b>Stability&amp;Storage</b>    | Store at ≤-70°C, stable for 6 months after receipt. Store at ≤-70°C, stable for 3 months under sterile conditions after opening. Please minimize freeze-thaw cycles.  |
| <b>Reconstitution</b>           | Always centrifuge tubes before opening. Do not mix by vortex or pipetting. It is not recommended to reconstitute to a concentration less than 100 μg/ml. Dissolve the lyophilized protein in distilled water. Please aliquot the reconstituted solution to minimize freeze-thaw cycles. Always centrifuge tubes before opening. Do not mix by vortex or pipetting. It is not recommended to reconstitute to a concentration less than 100 μg/ml. Dissolve the lyophilized protein in distilled water. Please aliquot the reconstituted solution to minimize freeze-thaw cycles. |

## SDS-PAGE image

**Product Name: Recombinant Mouse PRLR (C-6His)**  
**Catalog #: PHM1372**



### Alternative Names

Prolactin receptor; PRL-R; Prlr; Prolactin R; PRLR

### Background

The prolactin receptor (PRLR) is a member of the class I cytokine/lactogen receptor family which mediates the diverse cellular actions of prolactin in several tissues. PRLRs are expressed in normal and neoplastic human breast tissue, and in most breast cancer cells. PRLR contains an extracellular region that binds prolactin, a transmembrane region, and a cytoplasmic region required for the activation of the Jak2-Stat5 signal transduction pathway by Prl which is essential for transcriptional activation of all known prolactin regulated genes. PRLRs have also been observed in ovarian follicular cells of mice, pigs, sheep, deer, and humans, as well as in luteal tissue in cow and horse ovaries. Furthermore, PRLR knockout mice exhibit failure of embryonic implantation, reduced number of mature oocytes, and low fertilization rates. Knockout females also display a reduced number of primary follicles.

### Note

For Research Use Only , Not for Diagnostic Use.