

**Product Name: Recombinant Mouse Podoplanin (C-Fc)**  
**Catalog #: PHM1350**



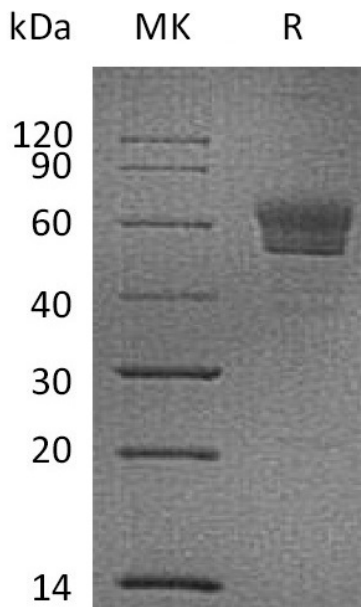
---

## Summary

<b>Name</b>	Podoplanin
<b>Purity</b>	Greater than 95% as determined by reducing SDS-PAGE
<b>Endotoxin level</b>	<1 EU/μg as determined by LAL test.
<b>Construction</b>	Recombinant Mouse Podoplanin is produced by our Mammalian expression system and the target gene encoding Gly23-Lys133 is expressed with a human IgG1 Fc tag at the C-terminus.
<b>Accession #</b>	Q62011
<b>Host</b>	Human Cells
<b>Species</b>	Mouse
<b>Predicted Molecular Mass</b>	38.6 KDa
<b>Formulation</b>	Lyophilized from a 0.2 μm filtered solution of PBS, pH 7.4.
<b>Shipping</b>	The product is shipped at ambient temperature. Upon receipt, store it immediately at the temperature listed below.
<b>Stability&amp;Storage</b>	Lyophilized protein should be stored at ≤ -20°C, stable for one year after receipt. Reconstituted protein solution can be stored at 2-8°C for 2-7 days. Aliquots of reconstituted samples are stable at ≤ -20°C for 3 months.
<b>Reconstitution</b>	Always centrifuge tubes before opening. Do not mix by vortex or pipetting. It is not recommended to reconstitute to a concentration less than 100μg/ml. Dissolve the lyophilized protein in distilled water. Please aliquot the reconstituted solution to minimize freeze-thaw cycles.

## SDS-PAGE image

**Product Name: Recombinant Mouse Podoplanin (C-Fc)**  
**Catalog #: PHM1350**



### Alternative Names

Podoplanin; Aggrus; Glycoprotein 38; Gp38; PA2.26 antigen; T1-alpha; T1A

### Background

Podoplanin belongs to the podoplanin family, also known as Glycoprotein 38. Podoplanin is synthesized as a 172 amino acid (aa) precursor with a 22 aa signal sequence, a 119 aa extracellular domain (ECD), a 21 aa transmembrane region, and a short, 10 aa cytoplasmic tail. Detected at high levels in lung and brain, at lower levels in kidney, stomach, liver, spleen and esophagus, and not detected in skin and small intestine. Expressed in epithelial cells of choroid plexus, ependyma, glomerulus and alveolus, in mesothelial cells and in endothelia of lymphatic vessels. Also expressed in stromal cells of peripheral lymphoid tissue and thymic epithelial cells. Detected in carcinoma cell lines and cultured fibroblasts. Expressed at higher levels in colon carcinomas than in normal colon tissue. It can interact with CLEC1B; the interaction is independent of CLEC1B glycosylation and activates CLEC1B. It may be involved in cell migration and/or actin cytoskeleton organization. When expressed in keratinocytes, induces changes in cell morphology with transfected cells showing an elongated shape, numerous membrane protrusions, major reorganization of the actin cytoskeleton, increased motility and decreased cell adhesion. Required for normal lung cell proliferation and alveolus formation at birth. Ligand for CLEC1B, a platelet receptor. Induces platelet aggregation. Does not have any effect on folic acid or amino acid transport. Does not function as a water channel or as a regulator of aquaporin-type water channels.

### Note

For Research Use Only , Not for Diagnostic Use.