

**Product Name: Recombinant Mouse PLXDC2 (C-6His)**  
**Catalog #: PHM1345**



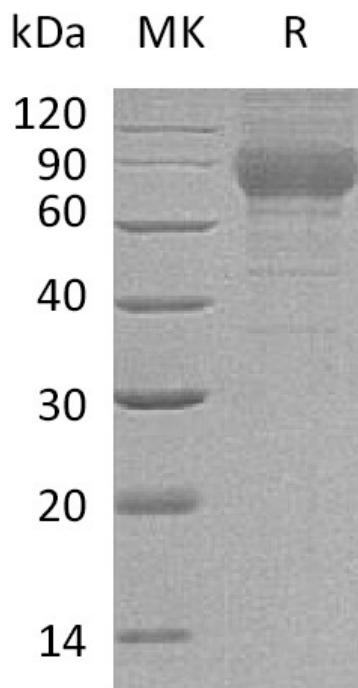
---

## Summary

<b>Name</b>	plexin domain-containing protein 2/PLXDC2
<b>Purity</b>	Greater than 95% as determined by reducing SDS-PAGE
<b>Endotoxin level</b>	<1 EU/μg as determined by LAL test.
<b>Construction</b>	Recombinant Mouse Plexin Domain-containing Protein 2 is produced by our Mammalian expression system and the target gene encoding Glu31-Ala455 is expressed with a 6His tag at the C-terminus.
<b>Accession #</b>	AAH57881.1
<b>Host</b>	Human Cells
<b>Species</b>	Mouse
<b>Predicted Molecular Mass</b>	48.95 KDa
<b>Formulation</b>	Lyophilized from a 0.2 μm filtered solution of 20mM Glycine-HCl, 10% Trehalose, 0.05% Tween 80, pH 3.5.
<b>Shipping</b>	The product is shipped at ambient temperature. Upon receipt, store it immediately at the temperature listed below.
<b>Stability&amp;Storage</b>	Lyophilized protein should be stored at ≤ -20°C, stable for one year after receipt. Reconstituted protein solution can be stored at 2-8°C for 2-7 days. Aliquots of reconstituted samples are stable at ≤ -20°C for 3 months.
<b>Reconstitution</b>	Always centrifuge tubes before opening. Do not mix by vortex or pipetting. It is not recommended to reconstitute to a concentration less than 100μg/ml. Dissolve the lyophilized protein in distilled water. Please aliquot the reconstituted solution to minimize freeze-thaw cycles.

## SDS-PAGE image

**Product Name: Recombinant Mouse PLXDC2 (C-6His)**  
**Catalog #: PHM1345**



### **Alternative Names**

Plexin domain-containing protein 2; Tumor endothelial marker 7-related protein; Plxdc2; Tem7r

### **Background**

Mouse Plexin domain-containing protein 2 (PLXDC2) is a single-pass type I membrane protein. The protein is expressed in tumor endothelium and in vessels of some normal tissues, such as the muscle and lung. PLXDC2 can interact with CTTN, and may play a role in tumor angiogenesis.

### **Note**

For Research Use Only , Not for Diagnostic Use.