

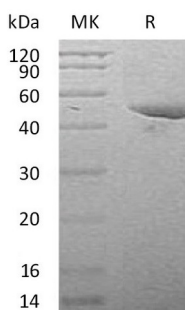
Product Name: Recombinant Mouse Serpin E1 (C-6His)
Catalog #: PHM1335



Summary

Name	Serpin E1/PAI-1/Plasminogen activator inhibitor type 1
Purity	Greater than 95% as determined by reducing SDS-PAGE
Endotoxin level	<1 EU/μg as determined by LAL test.
Construction	Recombinant Mouse Plasminogen Activator Inhibitor is produced by our Mammalian expression system and the target gene encoding Phe22-Pro402 is expressed with a 6His tag at the C-terminus.
Accession #	G5E899
Host	Human Cells
Species	Mouse
Predicted Molecular Mass	43.7 KDa
Formulation	Lyophilized from a 0.2 μm filtered solution of PBS, 5% Trehalose, 5% Mannitol, 0.02% Tween 80, 1mM EDTA, pH7.4.
Shipping	The product is shipped at ambient temperature. Upon receipt, store it immediately at the temperature listed below.
Stability&Storage	Store at ≤-70°C, stable for 6 months after receipt. Store at ≤-70°C, stable for 3 months under sterile conditions after opening. Please minimize freeze-thaw cycles.
Reconstitution	Always centrifuge tubes before opening. Do not mix by vortex or pipetting. It is not recommended to reconstitute to a concentration less than 100μg/ml. Dissolve the lyophilized protein in distilled water. Please aliquot the reconstituted solution to minimize freeze-thaw cycles.

SDS-PAGE image



Background

Product Name: Recombinant Mouse Serpin E1 (C-6His)
Catalog #: PHM1335



Alternative Names

Plasminogen activator inhibitor 1; Endothelial plasminogen activator inhibitor; Serpin E1; Mr1; Pai1; Planh1

Background

Plasminogen activator inhibitor-1 (serpin E1) is a serine protease inhibitor which belongs to the serpin family. Serpin E1 acts as bait for tissue plasminogen activator, urokinase, protein C and matriptase-3/TMPRSS7. Its rapid interaction with PLAT may function as a major control point in the regulation of fibrinolysis.

Note

For Research Use Only , Not for Diagnostic Use.