

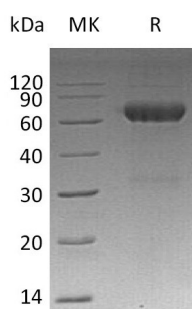
Product Name: Recombinant Mouse MMP-12 (C-6His)
Catalog #: PHM1126



Summary

Name	MMP-12/Macrophage metalloelastase
Purity	Greater than 95% as determined by reducing SDS-PAGE
Endotoxin level	<1 EU/μg as determined by LAL test.
Construction	Recombinant Mouse Matrix Metalloproteinase 12 is produced by our Mammalian expression system and the target gene encoding Ala29-Cys473 is expressed with a 6His tag at the C-terminus. The proenzyme needs to be activated by APMA for an activated form.
Accession #	P34960
Host	Human Cells
Species	Mouse
Predicted Molecular Mass	53 KDa
Formulation	Supplied as a 0.2 μm filtered solution of 20mM PB, 500mM NaCl, 0.01% Tween80, 1mM EDTA, 50% Glycerol, pH6.0.
Shipping	The product is shipped on dry ice/polar packs. Upon receipt, store it immediately at the temperature listed below.
Stability&Storage	Store at ≤-70°C, stable for 6 months after receipt. Store at ≤-70°C, stable for 3 months under sterile conditions after opening. Please minimize freeze-thaw cycles.
Reconstitution	

SDS-PAGE image



Background

Alternative Names	Macrophage metalloelastase; MME; Matrix metalloproteinase-12; MMP-12; Mmp12; Mme; Mmel
Background	Matrix metalloproteinase-12 (MMP12) is a secreted protein. It contains 4

Product Name: Recombinant Mouse MMP-12 (C-6His)
Catalog #: PHM1126



hemopexin repeats and belongs to the peptidase M10A family. MMP12 may be involved in tissue injury and remodeling and have significant elastolytic activity. It can accept large and small amino acids at the P1 site, but has a preference for leucine. Aromatic or hydrophobic residues are preferred at the P1 site, with small hydrophobic residues (preferably alanine) occupying P3.

Note

For Research Use Only , Not for Diagnostic Use.