

Product Name: Recombinant Mouse LDHA (C-6His)
Catalog #: PHM1067

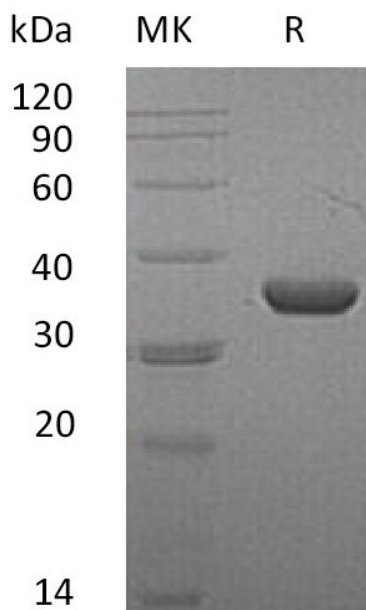


Summary

Name	LDHA/Ldh1/L-lactate dehydrogenase
Purity	Greater than 95% as determined by reducing SDS-PAGE
Endotoxin level	<1 EU/μg as determined by LAL test.
Construction	Recombinant Mouse L-lactate Dehydrogenase is produced by our Mammalian expression system and the target gene encoding Met1-Phe332 is expressed with a 6His tag at the C-terminus.
Accession #	P06151
Host	Human Cells
Species	Mouse
Predicted Molecular Mass	37.5 KDa
Formulation	Supplied as a 0.2 μm filtered solution of 20mM Tris-HCl, 50%Glycerol, 500 mMNaCl, 5% Trehalose, 5% Mannitol, 0.01% Tween80, 1mM EDTA, pH9.0.
Shipping	The product is shipped on dry ice/polar packs. Upon receipt, store it immediately at the temperature listed below.
Stability&Storage	Store at ≤-70°C, stable for 6 months after receipt. Store at ≤-70°C, stable for 3 months under sterile conditions after opening. Please minimize freeze-thaw cycles.
Reconstitution	

SDS-PAGE image

Product Name: Recombinant Mouse LDHA (C-6His)
Catalog #: PHM1067



Alternative Names

LDHA;Ldh1;L-lactate dehydrogenase

Background

Mouse Lactate dehydrogenase A (LDHA) is a member of the LDH/MDH superfamily and LDH family. LDHA catalyzes the inter-conversion of pyruvate and L-lactate with concomitant inter-conversion of NADH and NAD⁺. LDHA is found in most somatic tissues, though predominantly in muscle tissue and tumours. It has also been shown that LDHA plays an important role in the development, invasion and metastasis of malignancies. Mutations in LDHA have been linked to exertional myoglobinuria.

Note

For Research Use Only , Not for Diagnostic Use.