

Product Name: Recombinant Mouse IL-7 (C-6His)
Catalog #: PHM1013

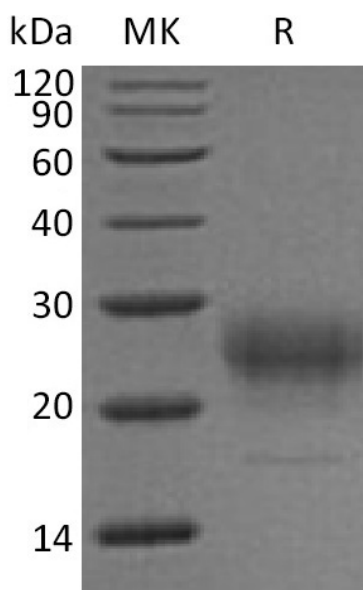


Summary

Name	IL-7/Interleukin-7
Purity	Greater than 95% as determined by reducing SDS-PAGE
Endotoxin level	<1 EU/μg as determined by LAL test.
Construction	Recombinant Mouse Interleukin-7 is produced by our Mammalian expression system and the target gene encoding Glu26-Ile154 is expressed with a 6His tag at the C-terminus.
Accession #	P10168
Host	Human Cells
Species	Mouse
Predicted Molecular Mass	15.9 KDa
Formulation	Lyophilized from a 0.2 μm filtered solution of PBS, pH 7.4.
Shipping	The product is shipped at ambient temperature. Upon receipt, store it immediately at the temperature listed below.
Stability&Storage	Lyophilized protein should be stored at ≤ -20°C, stable for one year after receipt. Reconstituted protein solution can be stored at 2-8°C for 2-7 days. Aliquots of reconstituted samples are stable at ≤ -20°C for 3 months.
Reconstitution	Always centrifuge tubes before opening. Do not mix by vortex or pipetting. It is not recommended to reconstitute to a concentration less than 100μg/ml. Dissolve the lyophilized protein in distilled water. Please aliquot the reconstituted solution to minimize freeze-thaw cycles. Always centrifuge tubes before opening. Do not mix by vortex or pipetting. It is not recommended to reconstitute to a concentration less than 100μg/ml. Dissolve the lyophilized protein in distilled water. Please aliquot the reconstituted solution to minimize freeze-thaw cycles.

SDS-PAGE image

Product Name: Recombinant Mouse IL-7 (C-6His)
Catalog #: PHM1013



Alternative Names

IL-7; IL-7 interleukin-7; interleukin-7; Lymphopoietin -1; PBGF

Background

Mouse interleukin-7(IL-7) is the member of hemopoietin family which is important to the differentiation, proliferation, and survival of lymphocyte. Mouse IL-7 shares approximately 88% aa sequence identity with rat IL-7 and 58-60% with human, equine, bovine, ovine, porcine, feline and canine IL-7. It is widely expressed in primary and secondary lymphoid tissues cell and stromal epithelial cells of the thymus, bone marrow, and intestines. IL-7 activation of IL-7 R alpha is critical for both T cell and B cell lineage development. It is important for proliferation during certain stages of B-cell maturation. IL-7 contributes to the maintenance of all naïve and memory T cells, mainly by promoting expression of the anti-apoptotic protein Bcl-2. It is required for optimal T cell-dendritic cell interaction.

Note

For Research Use Only , Not for Diagnostic Use.