

**Product Name: Recombinant Mouse CD16(C-6His)**  
**Catalog #: PHM0630**



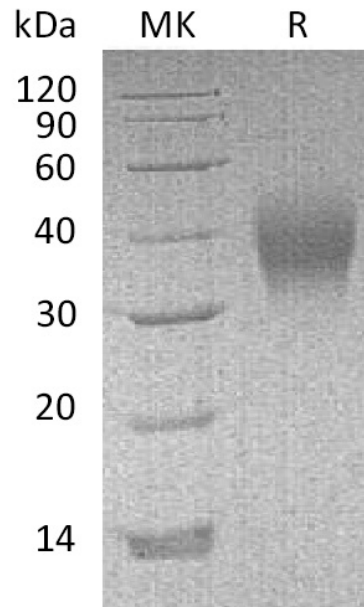
---

## Summary

|                                 |  |
|---------------------------------|--|
| <b>Name</b>                     | Fc gamma RIII/CD16/FCGR3   |
| <b>Purity</b>                   | Greater than 95% as determined by reducing SDS-PAGE  |
| <b>Endotoxin level</b>          | <1 EU/μg as determined by LAL test.  |
| <b>Construction</b>             | Recombinant Mouse Low Affinity IgG Fc Receptor III is produced by our Mammalian expression system and the target gene encoding Ala31-Thr215 is expressed with a 6His tag at the C-terminus.  |
| <b>Accession #</b>              | P08508   |
| <b>Host</b>                     | Human Cells  |
| <b>Species</b>                  | Mouse  |
| <b>Predicted Molecular Mass</b> | 22 KDa   |
| <b>Formulation</b>              | Lyophilized from a 0.2 μm filtered solution of 20 mM PB, 10% Sucrose, 8% Mannitol, 0.05% Tween 80, pH 7.0.   |
| <b>Shipping</b>                 | The product is shipped at ambient temperature. Upon receipt, store it immediately at the temperature listed below.   |
| <b>Stability&amp;Storage</b>    | Lyophilized protein should be stored at ≤ -20°C, stable for one year after receipt. Reconstituted protein solution can be stored at 2-8°C for 2-7 days. Aliquots of reconstituted samples are stable at ≤ -20°C for 3 months.  |
| <b>Reconstitution</b>           | Always centrifuge tubes before opening. Do not mix by vortex or pipetting. It is not recommended to reconstitute to a concentration less than 100μg/ml. Dissolve the lyophilized protein in distilled water. Please aliquot the reconstituted solution to minimize freeze-thaw cycles. |

## SDS-PAGE image

**Product Name: Recombinant Mouse CD16(C-6His)**  
**Catalog #: PHM0630**



### **Alternative Names**

Low affinity immunoglobulin gamma Fc region receptor III; Fcgr3; Fc gamma Receptor III; CD-antigen 16; CD16; FcRIII; IgG Fc receptor III

### **Background**

Low affinity immunoglobulin gamma Fc region receptor III (Fc gamma RIII/CD16) is a member of the Ig superfamily. Based on close relationships in their extracellular domains, the Fc gamma Rs have been divided into three classes composing of Fc gamma RI (CD64), Fc gamma RII (CD32), and Fc gamma RIII (CD16). Each group may be encoded by multiple genes and exist in different isoforms depending on species and cell type. Mouse CD16 is a type I transmembrane protein having two extracellular Ig-like domains consisting of immunoglobulin domain, repeat, signa and transmembrane, transmembrane helix. It is expressed on a variety of myeloid and lymphoid cells and associates with Fc R gamma to deliver an activating signal upon ligand binding. Fcgr3 is IgG binding and activation or inhibition of immune responses such as antibody-dependent cellular cytotoxicity, phagocytosis, cell surface receptor signaling pathway and positive regulation of type I/IIa/III hypersensitivity.

### **Note**

For Research Use Only , Not for Diagnostic Use.