

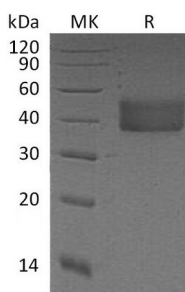
**Product Name: Recombinant Mouse CFD (C-6His)**  
**Catalog #: PHM0437**



## Summary

<b>Name</b>	Complement Factor D/Adipsin
<b>Purity</b>	Greater than 95% as determined by reducing SDS-PAGE
<b>Endotoxin level</b>	<1 EU/μg as determined by LAL test.
<b>Construction</b>	Recombinant Mouse Complement Factor D is produced by our Mammalian expression system and the target gene encoding Ile26-Ser259 is expressed with a 6His tag at the C-terminus.
<b>Accession #</b>	P03953
<b>Host</b>	Human Cells
<b>Species</b>	Mouse
<b>Predicted Molecular Mass</b>	26.5 KDa
<b>Formulation</b>	Lyophilized from a 0.2 μm filtered solution of 20mM Tris-HCl, 150mM NaCl, pH 7.5.
<b>Shipping</b>	The product is shipped at ambient temperature. Upon receipt, store it immediately at the temperature listed below.
<b>Stability&amp;Storage</b>	Store at ≤-70°C, stable for 6 months after receipt. Store at ≤-70°C, stable for 3 months under sterile conditions after opening. Please minimize freeze-thaw cycles.
<b>Reconstitution</b>	Always centrifuge tubes before opening. Do not mix by vortex or pipetting. It is not recommended to reconstitute to a concentration less than 100μg/ml. Dissolve the lyophilized protein in distilled water. Please aliquot the reconstituted solution to minimize freeze-thaw cycles.

## SDS-PAGE image



## Background

**Product Name: Recombinant Mouse CFD (C-6His)**  
**Catalog #: PHM0437**



---

**Alternative Names**

Complement factor D; 28 kDa adipocyte protein; Adipsin; C3 convertase activator; Properdin factor D; Cfd; Adn; Df

**Background**

Complement factor D, also known as adipsin, is a member of the chymotrypsin family of serine proteases, which plays an essential role in host defense as the rate-limiting enzyme in the alternative pathway of complement activation. Complement factor D activates a convertase (C3bBb) responsible for cleavage of the complement protein C3, which leads to the activation of terminal complement component C5-9 to form the membrane attack complex on microbial or cellular surfaces. It also functions in the regulation of systemic energy balance and physiologic and pathologic processes, including immunity and inflammation.

**Note**

For Research Use Only , Not for Diagnostic Use.