

Product Name: Recombinant Mouse CD40 (C-Fc)
Catalog #: PHM0350

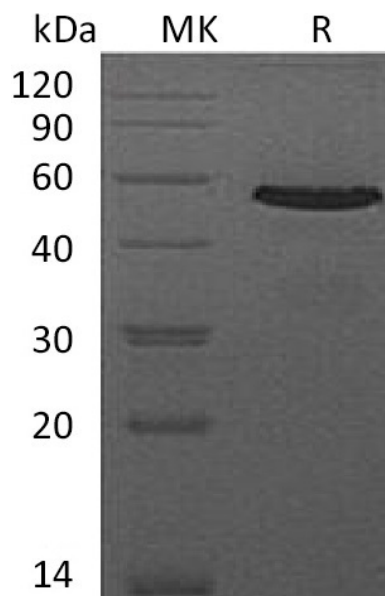


Summary

| | |
|---------------------------------|--|
| Name | CD40/TNFRSF5/CD40L receptor/Tumor Necrosis Factor Receptor Superfamily member 5/B-Cell Surface Antigen CD40/Bp50/CDw40 |
| Purity | Greater than 95% as determined by reducing SDS-PAGE |
| Endotoxin level | <1 EU/μg as determined by LAL test. |
| Construction | Recombinant Mouse CD40L Receptor is produced by our Mammalian expression system and the target gene encoding Leu20-Arg193 is expressed with a human IgG1 Fc tag at the C-terminus. |
| Accession # | P27512 |
| Host | Human Cells |
| Species | Mouse |
| Predicted Molecular Mass | 46.5 KDa |
| Formulation | Lyophilized from a 0.2 μm filtered solution of PBS, pH 7.4. |
| Shipping | The product is shipped at ambient temperature. Upon receipt, store it immediately at the temperature listed below. |
| Stability&Storage | Lyophilized protein should be stored at ≤ -20°C, stable for one year after receipt. Reconstituted protein solution can be stored at 2-8°C for 2-7 days. Aliquots of reconstituted samples are stable at ≤ -20°C for 3 months. |
| Reconstitution | Always centrifuge tubes before opening. Do not mix by vortex or pipetting. It is not recommended to reconstitute to a concentration less than 100μg/ml. Dissolve the lyophilized protein in distilled water. Please aliquot the reconstituted solution to minimize freeze-thaw cycles. |

SDS-PAGE image

Product Name: Recombinant Mouse CD40 (C-Fc)
Catalog #: PHM0350



Alternative Names

Tumor Necrosis Factor Receptor Superfamily member 5; B-Cell Surface Antigen CD40; Bp50; CD40L Receptor; CDw40; CD40; TNFRSF5

Background

CD40 is a Type I Transmembrane Glycoprotein that belongs to the TNF Receptor Superfamily. CD40 is expressed in B cells, follicular dendritic cells, dendritic cells, activated monocytes, macrophages, endothelial cells, vascular smooth muscle cells, and several tumor cell lines. The extracellular domain of CD40 is characterized by Cysteine rich repeat regions. Interaction of CD40 with its ligand (CD40L) leads to aggregation of CD40 molecules, which in turn interact with cytoplasmic components to initiate signaling pathways. Several different TRAF proteins (adaptor proteins) have been identified to serve as mediators of the signal transduction. CD40 plays an essential role in mediating a broad variety of immune and inflammatory responses including T cell-dependent immunoglobulin class switching, memory B cell development, and germinal center formation.

Note

For Research Use Only , Not for Diagnostic Use.