

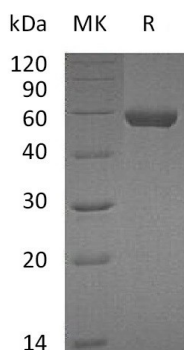
Product Name: Recombinant Mouse CPM (C-6His)
Catalog #: PHM0231



Summary

Name	carboxypeptidase M/CPM
Purity	Greater than 95% as determined by reducing SDS-PAGE
Endotoxin level	<1 EU/μg as determined by LAL test.
Construction	Recombinant Mouse Carboxypeptidase M is produced by our Mammalian expression system and the target gene encoding Leu18-Ser423 is expressed with a 6His tag at the C-terminus.
Accession #	Q80V42
Host	Human Cells
Species	Mouse
Predicted Molecular Mass	47.5 KDa
Formulation	Lyophilized from a 0.2 μm filtered solution of PBS, pH 7.4.
Shipping	The product is shipped at ambient temperature. Upon receipt, store it immediately at the temperature listed below.
Stability&Storage	Store at ≤-70°C, stable for 6 months after receipt. Store at ≤-70°C, stable for 3 months under sterile conditions after opening. Please minimize freeze-thaw cycles.
Reconstitution	Always centrifuge tubes before opening. Do not mix by vortex or pipetting. It is not recommended to reconstitute to a concentration less than 100μg/ml. Dissolve the lyophilized protein in distilled water. Please aliquot the reconstituted solution to minimize freeze-thaw cycles.

SDS-PAGE image



Background

Product Name: Recombinant Mouse CPM (C-6His)
Catalog #: PHM0231



Alternative Names

Carboxypeptidase M;CPM

Background

Carboxypeptidase M (CPM) belongs to the peptidase M14 family, and exists in cell membrane. The protein binds 1 zinc ion per subunit, and cleavage of C-terminal arginine or lysine residues from polypeptides. CPM specifically removes C-terminal basic residues (Arg or Lys) from peptides and proteins. It is believed to play important roles in the control of peptide hormone and growth factor activity at the cell surface, and in the membrane-localized degradation of extracellular proteins.

Note

For Research Use Only , Not for Diagnostic Use.