

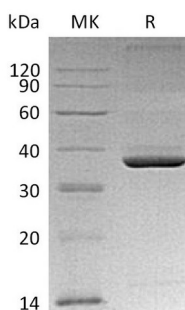
**Product Name: Recombinant Mouse ApoE (C-6His)**  
**Catalog #: PHM0088**



## Summary

<b>Name</b>	Apolipoprotein E/APOE
<b>Purity</b>	Greater than 95% as determined by reducing SDS-PAGE
<b>Endotoxin level</b>	<1 EU/μg as determined by LAL test.
<b>Construction</b>	Recombinant Mouse Apolipoprotein E is produced by our Mammalian expression system and the target gene encoding Glu19-Gln311 is expressed with a 6His tag at the C-terminus.
<b>Accession #</b>	P08226
<b>Host</b>	Human Cells
<b>Species</b>	Mouse
<b>Predicted Molecular Mass</b>	35 KDa
<b>Formulation</b>	Lyophilized from a 0.2 μm filtered solution of 20mM PB, 150mM NaCl, pH 7.4.
<b>Shipping</b>	The product is shipped at ambient temperature. Upon receipt, store it immediately at the temperature listed below.
<b>Stability&amp;Storage</b>	Lyophilized protein should be stored at ≤ -20°C, stable for one year after receipt. Reconstituted protein solution can be stored at 2-8°C for 2-7 days. Aliquots of reconstituted samples are stable at ≤ -20°C for 3 months.
<b>Reconstitution</b>	Always centrifuge tubes before opening. Do not mix by vortex or pipetting. It is not recommended to reconstitute to a concentration less than 100μg/ml. Dissolve the lyophilized protein in distilled water. Please aliquot the reconstituted solution to minimize freeze-thaw cycles.

## SDS-PAGE image



## Background

**Product Name: Recombinant Mouse ApoE (C-6His)**  
**Catalog #: PHM0088**

---



**Alternative Names** Apolipoprotein E; Apo-E; APOE

**Background** Apolipoprotein E (Apo-E), is a member of the apolipoprotein A1/A4/E family. ApoE is a major protein component of serum LDL, VLDL, HDL, and chylomicrons. APOE may function in mediating the binding, internalization, and catabolism of lipoprotein particles. It can serve as a ligand for the LDL (apo B/E) receptor and for the specific apo-E receptor (chylomicron remnant) of hepatic tissues. APOE is usually secreted in plasma. Phosphorylation sites are present in the extracellular medium.

**Note**

For Research Use Only , Not for Diagnostic Use.