

Product Name: Recombinant Mouse ANGPTL4 (C-Fc)
Catalog #: PHM0064

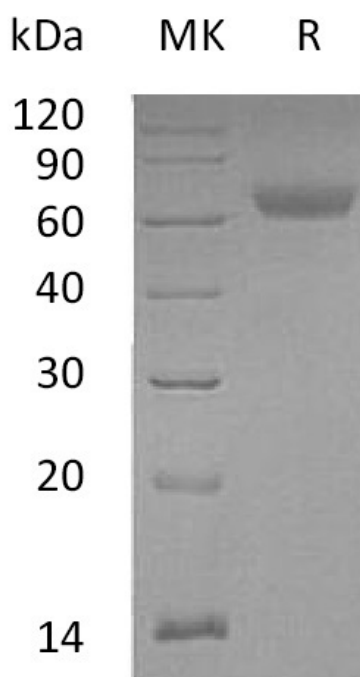


Summary

Name	Angiopoietin-related protein 4/ANGPTL4
Purity	Greater than 95% as determined by reducing SDS-PAGE
Endotoxin level	<1 EU/μg as determined by LAL test.
Construction	Recombinant Mouse Angiopoietin Like Protein 4 is produced by our Mammalian expression system and the target gene encoding Lys167-Ser410 is expressed with a human IgG1 Fc tag at the C-terminus.
Accession #	Q9Z1P8
Host	Human Cells
Species	Mouse
Predicted Molecular Mass	54.6 KDa
Formulation	Supplied as a 0.2 μm filtered solution of PBS, pH 7.4.
Shipping	The product is shipped on dry ice/polar packs. Upon receipt, store it immediately at the temperature listed below.
Stability&Storage	Store at ≤-70°C, stable for 6 months after receipt. Store at ≤-70°C, stable for 3 months under sterile conditions after opening. Please minimize freeze-thaw cycles.
Reconstitution	

SDS-PAGE image

Product Name: Recombinant Mouse ANGPTL4 (C-Fc)
Catalog #: PHM0064



Alternative Names

Angiopoietin-related protein 4;425O18-1;Angiopoietin-like protein 4;Fasting-induced adipose factor;Hepatic fibrinogen/angiopoietin-related protein;HFARP;Secreted protein Bk89;Angptl4;Farp; Fiaf; Ng27

Background

Angiopoietin-related protein 4 (ANGPTL4) is a secreted protein and contains 1 fibrinogen C-terminal domain. The protein may act as a regulator of angiogenesis and modulate tumorigenesis. It inhibits proliferation, migration, and tubule formation of endothelial cells and reduces vascular leakage. ANGPTL4 may exert a protective function on endothelial cells through an endocrine action. It is directly involved in regulating glucose homeostasis, lipid metabolism, and insulin sensitivity (By similarity). In response to hypoxia, the unprocessed form of the protein accumulates in the subendothelial extracellular matrix (ECM). The matrix-associated and immobilized unprocessed form limits the formation of actin stress fibers and focal contacts in the adhering endothelial cells and inhibits their adhesion. It also decreases motility of endothelial cells and inhibits the sprouting and tube formation.

Note

For Research Use Only , Not for Diagnostic Use.