

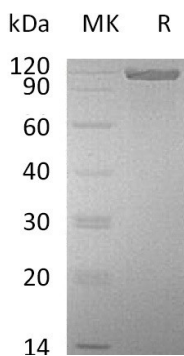
Product Name: Recombinant Mouse ALCAM (C-Fc)
Catalog #: PHM0031



Summary

Name	ALCAM/CD166
Purity	Greater than 95% as determined by reducing SDS-PAGE
Endotoxin level	<1 EU/μg as determined by LAL test.
Construction	Recombinant Mouse Activated Leukocyte Cell Adhesion Molecule is produced by our Mammalian expression system and the target gene encoding Trp28-Lys527 is expressed with a human IgG1 Fc tag at the C-terminus.
Accession #	Q61490
Host	Human Cells
Species	Mouse
Predicted Molecular Mass	84.2 KDa
Formulation	Lyophilized from a 0.2 μm filtered solution of PBS, pH 7.4.
Shipping	The product is shipped at ambient temperature. Upon receipt, store it immediately at the temperature listed below.
Stability&Storage	Lyophilized protein should be stored at ≤ -20°C, stable for one year after receipt. Reconstituted protein solution can be stored at 2-8°C for 2-7 days. Aliquots of reconstituted samples are stable at ≤ -20°C for 3 months.
Reconstitution	Always centrifuge tubes before opening. Do not mix by vortex or pipetting. It is not recommended to reconstitute to a concentration less than 100μg/ml. Dissolve the lyophilized protein in distilled water. Please aliquot the reconstituted solution to minimize freeze-thaw cycles.

SDS-PAGE image



Product Name: Recombinant Mouse ALCAM (C-Fc)
Catalog #: PHM0031



Background

Alternative Names

CD166 antigen; cluster of differentiation 166; CD166; activated leucocyte cell adhesion molecule; CD6 ligand; Protein DM-GRASP; CD6L; MEMD

Background

Activated leukocyte cell adhesion molecule (ALCAM), also named as CD166 and MEMD, is a type I transmembrane glycoprotein of immunoglobulin superfamily, which mediates homotypic and heterotypic interactions between cells. ALCAM interacts with high affinity with CD6 molecule but weaker homotypic (ALCAM-ALCAM) interactions have also been described. ALCAM-CD6 interactions play an important role in the maintenance of T cell activation, proliferation as well as in formation of immune synapse between antigen-presenting cell and lymphocytes. ALCAM is expressed on a wide variety of cells, particularly on activated lymphocytes, dendritic cells and monocytes, and on various epithelial cell types. It is also involved in multiple processes including embryogenesis, hematopoiesis, angiogenesis, and immune response. While expressed in a wide variety of tissues, ALCAM is usually restricted to subsets of cells in most adult tissues. Recently studies showed ALCAM has prognostic relevance in several human carcinomas, and it has been used as a biomarker for several tumor entities, including melanoma, gynecologic, urologic, and gastrointestinal cancers.

Note

For Research Use Only , Not for Diagnostic Use.