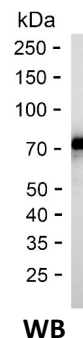
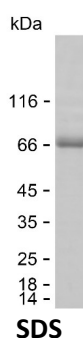


Summary

Name	CAGE1_HUMAN
Purity	Greater than 85% as determined by reducing SDS-PAGE
Endotoxin level	Please contact with the lab for this information
Tag	N-MBP & C-His
Accession #	Q8TC20
Host	HEK293
Species	Human
Molecular Mass	68 kDa
Buffer	Phosphate buffered saline
Shipping	The product is shipped on dry ice/polar packs. Upon receipt, store it immediately at the temperature listed below.
Stability&Storage	Store at $\leq -70^{\circ}\text{C}$, stable for 12 months after receipt. Store at $\leq -70^{\circ}\text{C}$, stable for 3 months under sterile conditions after opening. Please minimize freeze-thaw cycles.
Sequence	EAFDDEMTEK PEFQSQVYNY AKDNNIKQDS FKEENPMETS VSANTDQLGN EYFRQPPRS PPLIHCSGEM LKFTEKSLAK SIAKESALNP SQPPSFLCKT AVPSKEIQNY GEIPEMSVSY EKEVTAEGVE RPEIVSTWSS AGISWRSEAC RENCMPDWE QSAESLQPVQ EDMALNEVLQ KLKHTNRKQE VRIQELQCSN LYLEKRVKEL

image



Background

Alternative Names Cancer-associated gene 1 protein (CAGE-1) (Cancer/testis antigen 3) (CT3)

Note

Product Name: Recombinant Human CAGE1 Protein
Catalog #: PHH9545



For Research Use Only , Not for Diagnostic Use