

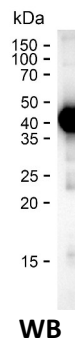
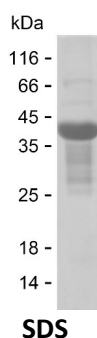
Product Name: Recombinant Human CKAP2L Protein
Catalog #: PHH9269



Summary

Name	CKP2L_HUMAN
Purity	Greater than 85% as determined by reducing SDS-PAGE
Endotoxin level	Please contact with the lab for this information
Tag	N-GST & C-His
Accession #	Q8IYA6
Host	HEK293
Species	Human
Molecular Mass	41 kDa
Buffer	Phosphate buffered saline
Shipping	The product is shipped on dry ice/polar packs. Upon receipt, store it immediately at the temperature listed below.
Stability&Storage	Store at $\leq -70^{\circ}\text{C}$, stable for 6 months after receipt. Store at $\leq -70^{\circ}\text{C}$, stable for 3 months under sterile conditions after opening. Please minimize freeze-thaw cycles.
Sequence	KRLTSECVSS NPYSKPSSKS FQQCEAGSST TGELSRKPVG SLNIEQLKTT KQQLTDQGNG KCIDFMNNIH VENESLDNFL KETNKENLLD ILTEPERKPD PKLYTRSKPK TDSYNQTKNS

image



Background

Alternative Names Cytoskeleton-associated protein 2-like (Radial fiber and mitotic spindle protein) (Radmis)

Note

For Research Use Only , Not for Diagnostic Use