

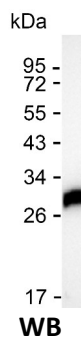
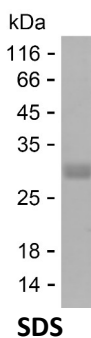
Product Name: Recombinant Human GLIPR1L1 protein
Catalog #: PHH8784



Summary

Name	GPRL1_HUMAN
Purity	Greater than 85% as determined by reducing SDS-PAGE
Endotoxin level	Please contact with the lab for this information
Tag	N-Myc & C-His
Accession #	Q6UWM5
Host	HEK293
Species	Human
Molecular Mass	25 kDa
Buffer	Phosphate buffered saline
Shipping	The product is shipped on dry ice/polar packs. Upon receipt, store it immediately at the temperature listed below.
Stability&Storage	Store at $\leq -70^{\circ}\text{C}$, stable for 6 months after receipt. Store at $\leq -70^{\circ}\text{C}$, stable for 3 months under sterile conditions after opening. Please minimize freeze-thaw cycles.
Sequence	SKIPSITDPH FIDNCIEAHN EWRGKVNPPA ADMKYMIWDK GLAKMAKAWA NQCKFEHNDC LDKSYKCYAA FEYVGENIWL GGIKSFTPRH AITAWYNETQ FYDFDSLSCS RVCGHYQLV WANSFYVGCA VAMCPNLGGA STAIFVCNYG PAGNFANMPP YVRGESCSLC SKEEKCCKNL CRTPQLIIPN QNPFLKPTG

image



Background

Alternative Names GLIPR1-like protein 1

Note

For Research Use Only , Not for Diagnostic Use

Product Name: Recombinant Human GLIPR1L1 protein
Catalog #: PHH8784

