

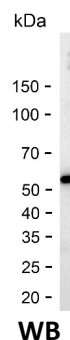
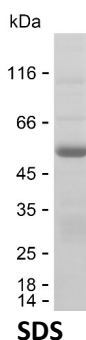
Product Name: Recombinant Human GCH1 Protein
Catalog #: PHH8161



Summary

Name	GCH1_HUMAN
Purity	Greater than 85% as determined by reducing SDS-PAGE
Endotoxin level	Please contact with the lab for this information
Tag	N-GST & C-His
Accession #	P30793
Host	HEK293
Species	Human
Molecular Mass	55 kDa
Buffer	Phosphate buffered saline
Shipping	The product is shipped on dry ice/polar packs. Upon receipt, store it immediately at the temperature listed below.
Stability&Storage	Store at $\leq -70^{\circ}\text{C}$, stable for 6 months after receipt. Store at $\leq -70^{\circ}\text{C}$, stable for 3 months under sterile conditions after opening. Please minimize freeze-thaw cycles.
Sequence	MEKGPVRAPA EKPRGARCSN GFPERDPPRP GSRPAEKPP RPEAKSAQPA DGWKGGERPRS EEDNELNLPN LAAAYSSILS SLGENPQRQG LLKTPWRAAS AMQFFTKGYQ ETISDVLNDA IFDEDHDEMIVKIDIDMFSM CEHHLVPFVG KVHIGYLPNK QVLGLSKLAR IVEIYSRRLQ VQERLTQKIA VAITEALRPA GVGVVVEATH MCMVMRGVQK MNSKTVTSTM LGVFREDPKT REEFLTLIRS

image



Background

Alternative Names GTP cyclohydrolase 1 (EC 3.5.4.16) (GTP cyclohydrolase I) (GTP-CH-I)

Note

Product Name: Recombinant Human GCH1 Protein
Catalog #: PHH8161



For Research Use Only , Not for Diagnostic Use