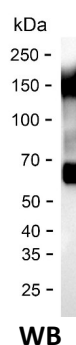
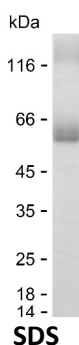


Summary

| | |
|------------------------------|---|
| Name | AT1A1_HUMAN |
| Purity | Greater than 85% as determined by reducing SDS-PAGE |
| Endotoxin level | Please contact with the lab for this information |
| Tag | N-MBP & C-His |
| Accession # | P05023 |
| Host | HEK293 |
| Species | Human |
| Molecular Mass | 59 kDa |
| Buffer | Phosphate buffered saline |
| Shipping | The product is shipped on dry ice/polar packs. Upon receipt, store it immediately at the temperature listed below. |
| Stability&Storage | Store at $\leq -70^{\circ}\text{C}$, stable for 12 months after receipt. Store at $\leq -70^{\circ}\text{C}$, stable for 3 months under sterile conditions after opening. Please minimize freeze-thaw cycles. |
| Sequence | LTQNRMTVAH MWFDNQIHEA DTTENQSGVS FDKTSATWLA LSRIAGLCNR AVFQANQENL PILKRAVAGD ASESALLKCI ELCCGSVKEM RERYAKIVEI PFNSTNKYQL SIHKNPNTSE PQHLLVMKGA PERILDRCSS ILLHGKEQPL |

image



Background

| | |
|--------------------------|--|
| Alternative Names | Sodium/potassium-transporting ATPase subunit alpha-1 (Na ⁺)/K ⁺ ATPase alpha-1 subunit) (EC 7.2.2.13) (Sodium pump subunit alpha-1) |
|--------------------------|--|

Note

For Research Use Only , Not for Diagnostic Use