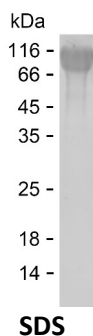


Summary

Name	LYAM2_HUMAN
Purity	Greater than 85% as determined by reducing SDS-PAGE
Endotoxin level	Please contact with the lab for this information
Tag	C-His
Accession #	P16581
Host	HEK293
Species	Human
Molecular Mass	59 kDa
Buffer	Phosphate buffered saline
Shipping	The product is shipped on dry ice/polar packs. Upon receipt, store it immediately at the temperature listed below.
Stability&Storage	Store at $\leq -70^{\circ}\text{C}$, stable for 6 months after receipt. Store at $\leq -70^{\circ}\text{C}$, stable for 3 months under sterile conditions after opening. Please minimize freeze-thaw cycles.
Sequence	MTYDEASAYC QQRYPHLVAI QNKKEIEYLN SILSYSPSYW WIGIRKVNNV WVWVGTQKPL TEEAKNWAPG EPNNRQKDED CVEIYIKREK DVGMWNDERC SKKKLALCYT AACTNTSCSG HGECVETINN YTCKCDPGFS GLKCEQIVNC TALESPEHGS LVCSHPLGNF SYNSSCSISC DRGYLPSSME TMQCMSSGEW SAPIPACNVV ECDAVTNPAN GFVECFQNPQ SFPWNTTCTF DCEEGFELMG AQLQCTSSG NWDNEKPTCK AVTCRAVRQP QNGSVRCSHS PAGEFTFKSS CNFTCEEGFM LQGPAQVECT TQGQWTQQIP VCEAFQCTAL SNPERGYMNC LPSASGSFRY GSSCEFSCEQ GFVLKGSKRL QCGPTGEWDN EKPTCEAVRC DAVHQPPLGL VRCAHSPIGE FTYKSSCAFS CEEGFELHGS TQLECTSQGQ WTEEVPSQV VKCSSLAVPG KINMSCSGEP VFGTVCKFAC PEGWTLNGSA ARTCGATGHW SGLLPTCEAP

image



Background

Product Name: Recombinant Human SELE Protein
Catalog #: PHH6818



Alternative Names

E-selectin (CD62 antigen-like family member E) (Endothelial leukocyte adhesion molecule 1) (ELAM-1) (Leukocyte-endothelial cell adhesion molecule 2) (LECAM2) (CD antigen CD62E)

Note

For Research Use Only , Not for Diagnostic Use