

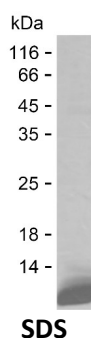
Product Name: Recombinant Human CCL15 Protein
Catalog #: PHH6812



Summary

Name	CCL15_HUMAN
Purity	Greater than 85% as determined by reducing SDS-PAGE
Endotoxin level	Please contact with the lab for this information
Tag	C-His
Accession #	Q16663
Host	HEK293
Species	Human
Molecular Mass	11 kDa
Buffer	Phosphate buffered saline
Shipping	The product is shipped on dry ice/polar packs. Upon receipt, store it immediately at the temperature listed below.
Stability&Storage	Store at $\leq -70^{\circ}\text{C}$, stable for 6 months after receipt. Store at $\leq -70^{\circ}\text{C}$, stable for 3 months under sterile conditions after opening. Please minimize freeze-thaw cycles.
Sequence	QFTNDAETEL MMSKLPLENP VVLNSFHFAA DCCTSYISQS IPCSLMKSYF ETSSECSKPG VIFLTKKGRQ VCAKPSGPGV QDCMKKLKPY SI

image



Background

Alternative Names	C-C motif chemokine 15 (Chemokine CC-2) (HCC-2) (Leukotactin-1) (LKN-1) (MIP-1 delta) (Macrophage inflammatory protein 5) (MIP-5) (Mrp-2b) (NCC-3) (Small-inducible cytokine A15) [Cleaved into: CCL15(22-92); CCL15(25-92); CCL15(29-92)]
--------------------------	--

Note

For Research Use Only , Not for Diagnostic Use

Product Name: Recombinant Human CCL15 Protein
Catalog #: PHH6812

