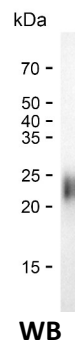
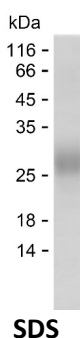


Summary

Name	CLC2A_HUMAN
Purity	Greater than 85% as determined by reducing SDS-PAGE
Endotoxin level	Please contact with the lab for this information
Tag	C-His
Accession #	Q6UVW9
Host	HEK293
Species	Human
Molecular Mass	15 kDa
Buffer	Phosphate buffered saline
Shipping	The product is shipped on dry ice/polar packs. Upon receipt, store it immediately at the temperature listed below.
Stability&Storage	Store at $\leq -70^{\circ}\text{C}$, stable for 6 months after receipt. Store at $\leq -70^{\circ}\text{C}$, stable for 3 months under sterile conditions after opening. Please minimize freeze-thaw cycles.
Sequence	KHAKPVACSG DWLGVRDKCF YFSDDTRNWT ASKIFCSLQK AELAQIDTQE DMEFLKRYAG TDMHWIGLSR KQGDSWKWTN GTTFNGWFEI IGNGSFAFLS ADGVHSSRGF IDIKWICKSKP

image



Background

Alternative Names	C-type lectin domain family 2 member A (Keratinocyte-associated C-type lectin) (KACL) (Proliferation-induced lymphocyte-associated receptor) (PILAR)
--------------------------	--

Note

For Research Use Only , Not for Diagnostic Use

Product Name: Recombinant Human CLEC2A Protein
Catalog #: PHH6729

