

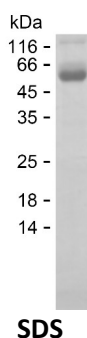
Product Name: Recombinant Human CLEC1A Protein
Catalog #: PHH6727



Summary

Name	CLC1A_HUMAN
Purity	Greater than 85% as determined by reducing SDS-PAGE
Endotoxin level	Please contact with the lab for this information
Tag	N-hFc & C-His
Accession #	Q8NC01
Host	HEK293
Species	Human
Molecular Mass	51 kDa
Buffer	Phosphate buffered saline
Shipping	The product is shipped on dry ice/polar packs. Upon receipt, store it immediately at the temperature listed below.
Stability&Storage	Store at $\leq -70^{\circ}\text{C}$, stable for 12 months after receipt. Store at $\leq -70^{\circ}\text{C}$, stable for 3 months under sterile conditions after opening. Please minimize freeze-thaw cycles.
Sequence	TGQDTISQME ERLGNTSQEL QSLQVQNIKL AGSLQHVAEK LCRELYNKAG AHR CSPCTEQ WKWHGDNCYQ FYKDSKSWED CKYFCLSENS TMLKINKQED LEFAASQSYS EFFYSYWTGL LRPDSGKAWL WMDGTPFTSE LFHIIIDVTS PRSRDCVAIL NGMIFSKDCK ELKRCVCERR AGMVKPESLH VPPETLGECD

image



Background

Alternative Names C-type lectin domain family 1 member A (C-type lectin-like receptor 1) (CLEC-1)

Note

For Research Use Only , Not for Diagnostic Use

Product Name: Recombinant Human CLEC1A Protein
Catalog #: PHH6727

