

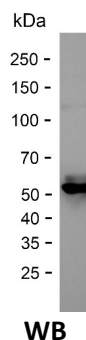
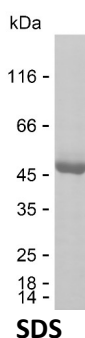
**Product Name: Recombinant Human CCL3L1 protein**  
**Catalog #: PHH6721**



## Summary

<b>Name</b>	CL3L1_HUMAN
<b>Purity</b>	Greater than 85% as determined by reducing SDS-PAGE
<b>Endotoxin level</b>	Please contact with the lab for this information
<b>Tag</b>	N-MBP & C-His
<b>Accession #</b>	P16619
<b>Host</b>	HEK293
<b>Species</b>	Human
<b>Molecular Mass</b>	50 kDa
<b>Buffer</b>	Phosphate buffered saline
<b>Shipping</b>	The product is shipped on dry ice/polar packs. Upon receipt, store it immediately at the temperature listed below.
<b>Stability&amp;Storage</b>	Store at $\leq -70^{\circ}\text{C}$ , stable for 6 months after receipt. Store at $\leq -70^{\circ}\text{C}$ , stable for 3 months under sterile conditions after opening. Please minimize freeze-thaw cycles.
<b>Sequence</b>	APLAADTPTA CCFSYTSRQI PQNFIADYFE TSSQCSKPSV IFLTKRGRQV CADPSEEWVQ KYVSDLELSA

## image



## Background

<b>Alternative Names</b>	C-C motif chemokine 3-like 1 (G0/G1 switch regulatory protein 19-2) (LD78-beta(1-70)) (PAT 464.2) (Small-inducible cytokine A3-like 1) (Tonsillar lymphocyte LD78 beta protein) [Cleaved into: LD78-beta(3-70); LD78-beta(5-70)]
--------------------------	--

## Note

For Research Use Only , Not for Diagnostic Use

**Product Name: Recombinant Human CCL3L1 protein**  
**Catalog #: PHH6721**

---

