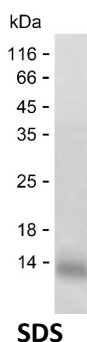


Summary

Name	CL3L1_HUMAN
Purity	Greater than 85% as determined by reducing SDS-PAGE
Endotoxin level	Please contact with the lab for this information
Tag	C-His
Accession #	P16619
Host	HEK293
Species	Human
Molecular Mass	9 kDa
Buffer	Phosphate buffered saline
Shipping	The product is shipped on dry ice/polar packs. Upon receipt, store it immediately at the temperature listed below.
Stability&Storage	Store at $\leq -70^{\circ}\text{C}$, stable for 12 months after receipt. Store at $\leq -70^{\circ}\text{C}$, stable for 3 months under sterile conditions after opening. Please minimize freeze-thaw cycles.
Sequence	APLAADTPTA CCFSYTSRQI PQNFIADYFE TSSQCSKPSV IFLTKRGRQV CADPSEEWVQ KYVSDLELSA

image



Background

Alternative Names	C-C motif chemokine 3-like 1 (G0/G1 switch regulatory protein 19-2) (LD78-beta(1-70)) (PAT 464.2) (Small-inducible cytokine A3-like 1) (Tonsillar lymphocyte LD78 beta protein) [Cleaved into: LD78-beta(3-70); LD78-beta(5-70)]
--------------------------	--

Note

For Research Use Only , Not for Diagnostic Use

Product Name: Recombinant Human CCL3L3 Protein
Catalog #: PHH6720

