

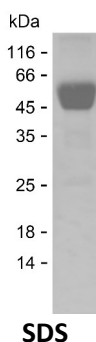
Product Name: Recombinant Human KCNMB2 Protein
Catalog #: PHH6651



Summary

Name	KCMB2_HUMAN
Purity	Greater than 85% as determined by reducing SDS-PAGE
Endotoxin level	Please contact with the lab for this information
Tag	C-hFc & C-His
Accession #	Q9Y691
Host	HEK293
Species	Human
Molecular Mass	42 kDa
Buffer	Phosphate buffered saline
Shipping	The product is shipped on dry ice/polar packs. Upon receipt, store it immediately at the temperature listed below.
Stability&Storage	Store at $\leq -70^{\circ}\text{C}$, stable for 12 months after receipt. Store at $\leq -70^{\circ}\text{C}$, stable for 3 months under sterile conditions after opening. Please minimize freeze-thaw cycles.
Sequence	RSYMQSVWTE ESQCTLLNAS ITETFNCSFS CGPDCWKL SQ YPCLQVYVNL TSSGEKLLLY HTEETIKINQ KCSYIPKCGK NFEESMSLVN VVMENFRKYQ HFSCYSDPEG NQKSVILTKL

image



Background

Alternative Names	Calcium-activated potassium channel subunit beta-2 (BK channel subunit beta-2) (BKbeta2) (Hbeta2) (Calcium-activated potassium channel, subfamily M subunit beta-2) (Charybdotoxin receptor subunit beta-2) (Hbeta3) (K(VCA)beta-2) (Maxi K channel subunit beta-2) (Slo-beta-2)
--------------------------	--

Note

Product Name: Recombinant Human KCNMB2 Protein
Catalog #: PHH6651



For Research Use Only , Not for Diagnostic Use