

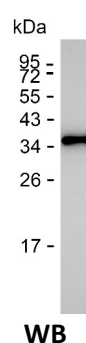
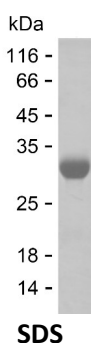
Product Name: Recombinant Human IGFBPL1 Protein
Catalog #: PHH6603



Summary

Name	IBPL1_HUMAN
Purity	Greater than 85% as determined by reducing SDS-PAGE
Endotoxin level	Please contact with the lab for this information
Tag	C-His
Accession #	Q8WX77
Host	HEK293
Species	Human
Molecular Mass	26 kDa
Buffer	Phosphate buffered saline
Shipping	The product is shipped on dry ice/polar packs. Upon receipt, store it immediately at the temperature listed below.
Stability&Storage	Store at $\leq -70^{\circ}\text{C}$, stable for 12 months after receipt. Store at $\leq -70^{\circ}\text{C}$, stable for 3 months under sterile conditions after opening. Please minimize freeze-thaw cycles.
Sequence	CRPEGCPAPA PCPAPGISAL DECGCCARCL GAEGASCGGR AGGRCGPGLV CASQAAGAAP EGTGLCVCAQ RGTVCGSDGR SYPSVCALRL RARHTPRAHP GHLHKARDGP CEFAPVVVVP PRSVHNVGTGA QVGLSCEVRA VPTPVITWRK VTKSPEGTQA LEELPGDHVN IAVQVRGGPS DHEATAWILI NPLRKEDEGV YQCHAANMVG EAESHSTVTV LDLSKYRSFH

image



Background

Alternative Names Insulin-like growth factor-binding protein-like 1 (IGFBP-related protein 10) (Insulin-like growth factor-binding-related protein 4) (IGFBP-rP4)

Note

Product Name: Recombinant Human IGFBPL1 Protein
Catalog #: PHH6603



For Research Use Only , Not for Diagnostic Use