

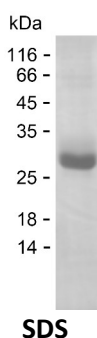
**Product Name: Recombinant Human CCL16 Protein**  
**Catalog #: PHH6563**



## Summary

<b>Name</b>	CCL16_HUMAN
<b>Purity</b>	Greater than 85% as determined by reducing SDS-PAGE
<b>Endotoxin level</b>	Please contact with the lab for this information
<b>Tag</b>	N-His & N-SUMO
<b>Accession #</b>	O15467
<b>Host</b>	HEK293
<b>Species</b>	Human
<b>Molecular Mass</b>	23 kDa
<b>Buffer</b>	Phosphate buffered saline
<b>Shipping</b>	The product is shipped on dry ice/polar packs. Upon receipt, store it immediately at the temperature listed below.
<b>Stability&amp;Storage</b>	Store at $\leq -70^{\circ}\text{C}$ , stable for 6 months after receipt. Store at $\leq -70^{\circ}\text{C}$ , stable for 3 months under sterile conditions after opening. Please minimize freeze-thaw cycles.
<b>Sequence</b>	QPKVPEWVNT PSTCCLKYYE KVLPRRLVVG YRKALNCHLP AIIFVTKRNR EVCTNPNDW VQEYIKDPNL PLLPTRNLST VKIITAKNGQ PQLLSQ

## image



## Background

<b>Alternative Names</b>	C-C motif chemokine 16 (Chemokine CC-4) (HCC-4) (Chemokine LEC) (IL-10-inducible chemokine) (LCC-1) (Liver-expressed chemokine) (Lymphocyte and monocyte chemoattractant) (LMC) (Monotactin-1) (MTN-1) (NCC-4) (Small-inducible cytokine A16)
--------------------------	---

## Note

For Research Use Only , Not for Diagnostic Use

**Product Name: Recombinant Human CCL16 Protein**  
**Catalog #: PHH6563**

---

