

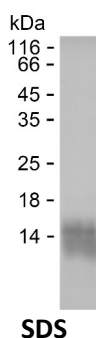
Product Name: Recombinant Human CCL16 Protein
Catalog #: PHH6562



Summary

Name	CCL16_HUMAN
Purity	Greater than 85% as determined by reducing SDS-PAGE
Endotoxin level	Please contact with the lab for this information
Tag	C-His
Accession #	O15467
Host	HEK293
Species	Human
Molecular Mass	12 kDa
Buffer	Phosphate buffered saline
Shipping	The product is shipped on dry ice/polar packs. Upon receipt, store it immediately at the temperature listed below.
Stability&Storage	Store at $\leq -70^{\circ}\text{C}$, stable for 6 months after receipt. Store at $\leq -70^{\circ}\text{C}$, stable for 3 months under sterile conditions after opening. Please minimize freeze-thaw cycles.
Sequence	QPKVPEWVNT PSTCCLKYYE KVLPRRLVVG YRKALNCHLP AIIFVTKRNR EVCTNPNDW VQEYIKDPNL PLLPTRNLST VKIITAKNGQ PQLLSQ

image



Background

Alternative Names	C-C motif chemokine 16 (Chemokine CC-4) (HCC-4) (Chemokine LEC) (IL-10-inducible chemokine) (LCC-1) (Liver-expressed chemokine) (Lymphocyte and monocyte chemoattractant) (LMC) (Monotactin-1) (MTN-1) (NCC-4) (Small-inducible cytokine A16)
--------------------------	---

Note

For Research Use Only , Not for Diagnostic Use

Product Name: Recombinant Human CCL16 Protein
Catalog #: PHH6562

