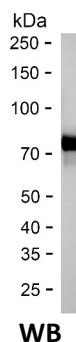
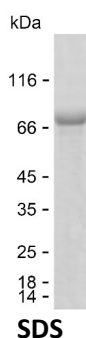


Summary

| | |
|------------------------------|--|
| Name | SRPK2_HUMAN |
| Purity | Greater than 85% as determined by reducing SDS-PAGE |
| Endotoxin level | Please contact with the lab for this information |
| Tag | N-MBP & C-His |
| Accession # | P78362 |
| Host | HEK293 |
| Species | Human |
| Molecular Mass | 62 kDa |
| Buffer | Phosphate buffered saline |
| Shipping | The product is shipped on dry ice/polar packs. Upon receipt, store it immediately at the temperature listed below. |
| Stability&Storage | Store at $\leq -70^{\circ}\text{C}$, stable for 6 months after receipt. Store at $\leq -70^{\circ}\text{C}$, stable for 3 months under sterile conditions after opening. Please minimize freeze-thaw cycles. |
| Sequence | ELLEKRLQEI EELERAERK IIEENITSAA PSNDQDGEYC PEVKLKTGGL EEAAEAETAK DNGEADQEE KEDAEKENIE KEDDDVDQEL ANIDPTWIES PKTNGHIENG PFSLEQLDD EDDDEEDCPN PEEYNLDEPN AESDYTYSSS YEQFNGELPN |

image



Background

| | |
|--------------------------|--|
| Alternative Names | SRSF protein kinase 2 (EC 2.7.11.1) (SFRS protein kinase 2) (Serine/arginine-rich protein-specific kinase 2) (SR-protein-specific kinase 2) [Cleaved into: SRSF protein kinase 2 N-terminal; SRSF protein kinase 2 C-terminal] |
|--------------------------|--|

Note

Product Name: Recombinant Human SRPK2 Protein
Catalog #: PHH6171



For Research Use Only , Not for Diagnostic Use