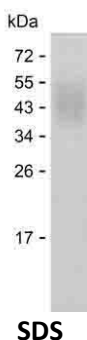


Summary

Name	SLAF1_HUMAN
Purity	Greater than 85% as determined by reducing SDS-PAGE
Endotoxin level	Please contact with the lab for this information
Tag	C-His
Accession #	Q13291
Host	HEK293
Species	Human
Molecular Mass	25 kDa
Buffer	Phosphate buffered saline
Shipping	The product is shipped on dry ice/polar packs. Upon receipt, store it immediately at the temperature listed below.
Stability&Storage	Store at $\leq -70^{\circ}\text{C}$, stable for 12 months after receipt. Store at $\leq -70^{\circ}\text{C}$, stable for 3 months under sterile conditions after opening. Please minimize freeze-thaw cycles.
Sequence	NCPKILRQLG SKVLLPLTYE RINKSMNKSI HIVVTMAKSL ENSVENKIVS LDPSEAGPPR YLGDRYKFYL ENLTGIRE S RKEDEGWYLM TLEKNVSVQR FCLQLRLYEQ VSTPEIKVLN KTQENGTCTL ILGCTVEKGD HVAYSWSEKA GTHPLNPANS SHLLSLTLGP QHADNIYICT VSNPISNNSQ TFSPWPGCRT

image



Background

Alternative Names	Signaling lymphocytic activation molecule (CDw150) (IPO-3) (SLAM family member 1) (CD antigen CD150)
--------------------------	--

Note

For Research Use Only , Not for Diagnostic Use

Product Name: Recombinant Human SLAMF1 Protein
Catalog #: PHH6081

