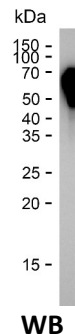


Summary

Name	KREM1_HUMAN
Purity	Greater than 85% as determined by reducing SDS-PAGE
Endotoxin level	Please contact with the lab for this information
Tag	C-His
Accession #	Q96MU8
Host	HEK293
Species	Human
Molecular Mass	42 kDa
Buffer	Phosphate buffered saline
Shipping	The product is shipped on dry ice/polar packs. Upon receipt, store it immediately at the temperature listed below.
Stability&Storage	Store at $\leq -70^{\circ}\text{C}$, stable for 6 months after receipt. Store at $\leq -70^{\circ}\text{C}$, stable for 3 months under sterile conditions after opening. Please minimize freeze-thaw cycles.
Sequence	RPAPSPGLGP ECFTANGADY RGTQNWALQ GGKPCFLWNE TFQHPYNTLK YPNGEGGLGE HNYCRNPDGD VSPWCYVAEH EDGVYWKYCE IPACQMPGNL GCYKDHGNPP PLTGTSKTSN KLTIQTCISF CRSQRKFAG MESGYACFCG NNPDYWKYGE AASTECNSVC FGDHTQPCGG DGRILFDL VGACGGNYS MSSVVYSPDF PDTYATGRVC YWTIRVPGAS HIHFSFPLFD IRDSADMVEL LDGYTHRVL RFGHRSRPL SFNVSLDFVI LYFFSDRINQ AQGFVLYQA VKEELPQERP AVNQTVAEVI TEQANLSVSA ARSSKVLYVI TTSPSHPPQT VPGSNSWAPP MGAGSHRVEG

image



Background

Alternative Names Kremen protein 1 (Dickkopf receptor) (Kringle domain-containing

Product Name: Recombinant Human KREMEN1 Protein
Catalog #: PHH6025



transmembrane protein 1) (Kringle-containing protein marking the eye and the nose)

Note

For Research Use Only , Not for Diagnostic Use