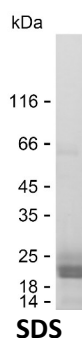


Summary

Name	LOXL1_HUMAN
Purity	Greater than 85% as determined by reducing SDS-PAGE
Endotoxin level	Please contact with the lab for this information
Tag	C-His
Accession #	Q08397
Host	HEK293
Species	Human
Molecular Mass	15 kDa
Buffer	Phosphate buffered saline
Shipping	The product is shipped on dry ice/polar packs. Upon receipt, store it immediately at the temperature listed below.
Stability&Storage	Store at $\leq -70^{\circ}\text{C}$, stable for 12 months after receipt. Store at $\leq -70^{\circ}\text{C}$, stable for 3 months under sterile conditions after opening. Please minimize freeze-thaw cycles.
Sequence	RARYEEYGGG EELPEYPPQG FYPAPERPYV PPPPPPDGL DRRYSHSLYS EGTPGFEQAY PDPGPEAAQA HGGDPRLGWY PPYANPPPEA YGPPRALEPP YLPVRSSDTP PPGGERNGAQ QGRLSVGSVY

image



Background

Alternative Names Lysyl oxidase homolog 1 (EC 1.4.3.-) (Lysyl oxidase-like protein 1) (LOL)

Note

For Research Use Only , Not for Diagnostic Use