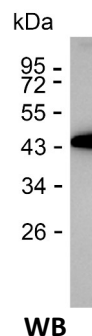
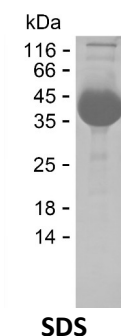


Summary

Name	IGLC2_HUMAN
Purity	Greater than 85% as determined by reducing SDS-PAGE
Endotoxin level	Please contact with the lab for this information
Tag	C-hFc & C-His
Accession #	P0DOY2
Host	HEK293
Species	Human
Molecular Mass	39 kDa
Buffer	Phosphate buffered saline
Shipping	The product is shipped on dry ice/polar packs. Upon receipt, store it immediately at the temperature listed below.
Stability&Storage	Store at $\leq -70^{\circ}\text{C}$, stable for 6 months after receipt. Store at $\leq -70^{\circ}\text{C}$, stable for 3 months under sterile conditions after opening. Please minimize freeze-thaw cycles.
Sequence	GQPKAAPSVT LFPPSSEELQ ANKATLVCLI SDFYPGAVTV AWKADSSPVK AGVETTTPSK QSNNKYAASS YLSLTPEQWK SHRSYSCQVT HEGSTVEKTV APTECS

image



Background

Alternative Names	Immunoglobulin lambda constant 2 (Ig lambda chain C region Kern) (Ig lambda chain C region NIG-64) (Ig lambda chain C region SH) (Ig lambda chain C region X) (Ig lambda-2 chain C region)
--------------------------	--

Note

For Research Use Only , Not for Diagnostic Use

Product Name: Recombinant Human IGLC2 Protein
Catalog #: PHH5943

