

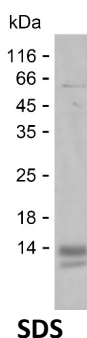
Product Name: Recombinant Human CCL26 Protein
Catalog #: PHH5815



Summary

| | |
|------------------------------|---|
| Name | CCL26_HUMAN |
| Purity | Greater than 85% as determined by reducing SDS-PAGE |
| Endotoxin level | Please contact with the lab for this information |
| Tag | C-His |
| Accession # | Q9Y258 |
| Host | HEK293 |
| Species | Human |
| Molecular Mass | 9 kDa |
| Buffer | Phosphate buffered saline |
| Shipping | The product is shipped on dry ice/polar packs. Upon receipt, store it immediately at the temperature listed below. |
| Stability&Storage | Store at $\leq -70^{\circ}\text{C}$, stable for 12 months after receipt. Store at $\leq -70^{\circ}\text{C}$, stable for 3 months under sterile conditions after opening. Please minimize freeze-thaw cycles. |
| Sequence | TRGSDISKTC CFQYSHKPLP WTWVRSYEFT SNSCSQRAVI FTTKRGKKVC THPRKKWVQK YISLLKTPKQ L |

image



Background

Alternative Names C-C motif chemokine 26 (CC chemokine IMAC) (Eotaxin-3) (Macrophage inflammatory protein 4-alpha) (MIP-4-alpha) (Small-inducible cytokine A26) (Thymic stroma chemokine-1) (TSC-1)

Note

For Research Use Only , Not for Diagnostic Use