

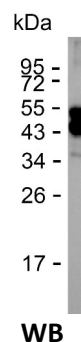
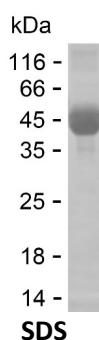
Product Name: Recombinant Human GSG1L2 Protein
Catalog #: PHH5755



Summary

Name	GS1L2_HUMAN
Purity	Greater than 85% as determined by reducing SDS-PAGE
Endotoxin level	Please contact with the lab for this information
Tag	C-hFc & C-His
Accession #	A8MUP6
Host	HEK293
Species	Human
Molecular Mass	38 kDa
Buffer	Phosphate buffered saline
Shipping	The product is shipped on dry ice/polar packs. Upon receipt, store it immediately at the temperature listed below.
Stability&Storage	Store at $\leq -70^{\circ}\text{C}$, stable for 12 months after receipt. Store at $\leq -70^{\circ}\text{C}$, stable for 3 months under sterile conditions after opening. Please minimize freeze-thaw cycles.
Sequence	WCEGTRRVVK PLCQDQPGGQ HCIHFKRDNS SNGRMDNNSQ AVLYIWELGD DKFIQRGFHV GLWQSCEESL NGEDEKCRSF RSVVPAEEQG

image



Background

Alternative Names Germ cell-specific gene 1-like protein 2 (GSG1-like protein 2)

Note

For Research Use Only , Not for Diagnostic Use