

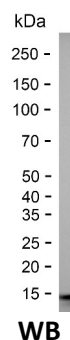
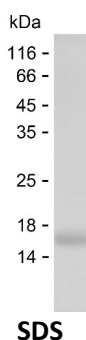
Product Name: Recombinant Human LEP Protein
Catalog #: PHH5745



Summary

Name	LEP_HUMAN
Purity	Greater than 85% as determined by reducing SDS-PAGE
Endotoxin level	Please contact with the lab for this information
Tag	N-9×His
Accession #	P41159
Host	HEK293
Species	Human
Molecular Mass	17 kDa
Buffer	Phosphate buffered saline
Shipping	The product is shipped on dry ice/polar packs. Upon receipt, store it immediately at the temperature listed below.
Stability&Storage	Store at $\leq -70^{\circ}\text{C}$, stable for 6 months after receipt. Store at $\leq -70^{\circ}\text{C}$, stable for 3 months under sterile conditions after opening. Please minimize freeze-thaw cycles.
Sequence	VPIQKVQDDT KTLIKTIVTR INDISHTQSV SSKQKVTGLD FIPGLHPILT LSKMDQTLAV YQQILTSMPs RNVIQISNDL ENLRDLLHVL AFSKSCHLPW ASGLETLDL GGVLEASGYS TEVVALSRLQ GSLQDMLWQL DLSPGC

image



Background

Alternative Names Leptin (Obese protein) (Obesity factor)

Note

For Research Use Only , Not for Diagnostic Use