

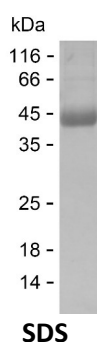
Product Name: Recombinant Human SLC22A31 Protein
Catalog #: PHH5603



Summary

| | |
|------------------------------|--|
| Name | S22AV_HUMAN |
| Purity | Greater than 85% as determined by reducing SDS-PAGE |
| Endotoxin level | Please contact with the lab for this information |
| Tag | C-hFc & C-His |
| Accession # | A6NKX4 |
| Host | HEK293 |
| Species | Human |
| Molecular Mass | 36 kDa |
| Buffer | Phosphate buffered saline |
| Shipping | The product is shipped on dry ice/polar packs. Upon receipt, store it immediately at the temperature listed below. |
| Stability&Storage | Store at $\leq -70^{\circ}\text{C}$, stable for 6 months after receipt. Store at $\leq -70^{\circ}\text{C}$, stable for 3 months under sterile conditions after opening. Please minimize freeze-thaw cycles. |
| Sequence | RPDPTLLPPA LRALRGPALL DAAIPRLGPT RAPAEALGVL SPSYLAPLTR APRPSSWASC SGAAAGPTWN |

image



Background

Alternative Names Putative solute carrier family 22 member 31

Note

For Research Use Only , Not for Diagnostic Use